

Children & Young People

Introduction

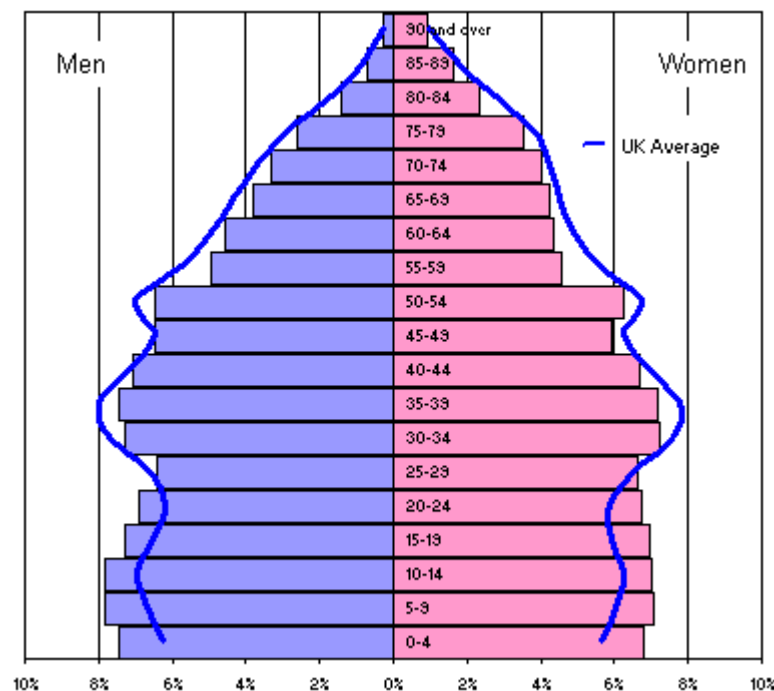
Bradford has a young population compared to other parts of the country. 36% of the District's population is under 25 years of age.

Nationally, the proportion of the population made up by young people has fallen over the past thirty years. In Bradford, however, a different pattern has emerged.

The percentage of people under 16 years of age in the UK fell from 25% in mid 1971 to 19% in mid 2004. In Bradford, children accounted for 14% of the total population in 1971. According to the latest population estimate for the Bradford District, there are 110,000 under 16-year olds, who make up 23% of the total population.

As the population pyramid below shows, there are also more people under the age of 25 than the national average. In 2004, people under the age of 25 accounted for 31.1% of the UK's total population. In Bradford, this figure is higher. There are 172,100 under 25-year olds in the District - accounting for 35.8% of the total population.

Age and sex breakdown - Bradford District (2001 Census)



The percentages on the pyramid represent the % of 'all males' (to the left) and the % of 'all females' (to the right) that are in that age group.

Over the past decade, the number of children in the District has fallen. The number of births recorded in the District fell during the late 1990s and early 00s, but has started to rise again. If this birth rate continues, the number of children will increase. The Office for National Statistics (ONS) has produced population projections for different parts of the country and for different age groups. These calculations are based on past birth rates, death rates and migration trends. ONS estimate that the number of 0 – 14 year olds in the District will rise to somewhere in the region of 120,000 by 2028, an increase of approximately 17,000 children in this age group over the next 25 years.

The number of young people between the age of 15 and 24 increased over the past decade and is expected to continue to increase over the next 25 years. By 2028, the ONS estimates that there will be an extra 4,000 people in this age group, a rise of 6%.

By 2028, it is estimated that under 14s will account for 21% of the larger total population of the Bradford District, and children and young people together, 34%. The comparable figures for England are 16% and 27% respectively.

Bradford's Local Area Agreement

Children and Young People is one of the four central themes of Bradford's Local Area Agreement, and its goals are:

- To promote health, reduce inequalities and promote life expectancy
- For all children and young people to live in a safe community
- For all children and young people to have access to high quality learning experiences, play, arts, sport and leisure which will enable them to enjoy and achieve and make a positive contribution to their community
- To improve life chances and economic well being for all young people by ensuring their access to relevant further education, employment and training.

Socio-economic Characteristics

Bradford is a District of many contrasts – while some children live in relatively prosperous households – a high proportion of children and young people in the District experience high levels of socio-economic deprivation.

In the District's secondary schools, 26.6% of pupils are eligible for free school meals compared to 15% nationally. The Index of Deprivation 2004 (ID2004) also shows high levels of socio-economic deprivation, particularly in the inner urban areas. Bradford is the 5th most deprived local authority on the income scale and the 6th for employment.

According to the 2001 Census, many children in the District live in 'workless' households. In 2001 there were 27,858 children in the District living in households with no adult in employment. This is 23% of all children. 19% of dependent children live in overcrowded accommodation. The national

average is 12.3%. Over ¼ of all children in the District live in homes without central heating and 23% in families with no car.

The vast majority of children live in 'married couple' families (65%). Nearly one in four (23% - 28,038 dependent children) live in lone - parent families, most of whom are headed by the mother. A reduction in the number of children in care has been achieved in recent years in December 2006 there were 813 children in care.

Ethnicity

According to the 2001 Census, 66% of the children living in the District have a White British heritage and 24% have a Pakistani ethnic background. Approximately 3% of children in the District have an Indian heritage and nearly 2% a Bangladeshi one. The under 25-year-old population has a similar ethnic group breakdown.

34,000 children, over ¼ of all children in the District, were either born outside the UK, or live in households whose head of household was born outside the UK, the Irish Republic or the Old Commonwealth.

The 2001 Census, for the first time, included a question on religion. It was not compulsory to answer the question, but from the information collected on this topic, the Census shows that 47% of under 16 year olds in the District are Christian, 26% Muslim, 1% Hindu and 1% Sikh. The religious make up of 16 – 24 year olds is very similar.

Health

The 2001 Census included a question on the general health of people in the household over the 12 months prior to Census day. 89% of children were reported to be in 'good' health. However, according to the Census, 6,024 children have a limiting long-term illness / disability. This is nearly 5% of all children, which is higher than the national average of 4.3%.

A question was also asked in the Census on the amount of 'unpaid care' (i.e. looking after or supporting family members, friends or neighbours because of illness, disability or old age) people did. At least 2,000 children in the District provide some level of unpaid care.

The District's infant mortality rate, 9 per thousand, is poor in relation to the national average of 5.4. There is evidence that the rate is highest in the most socio-economically deprived communities.

Another feature of children and young people's health in the District, is the teenage conception rate, which is falling, but remains above the national average. It is highest in areas with a high proportion of socio-economically deprived White UK heritage population.

Other indicators highlight health problems amongst the District's children and young people, including evidence that a high proportion of 16 year olds (55%) have tried illegal drugs. Studies have also shown that a significant proportion of children and young people have obesity and dietary problems.

To combat the above health issues, the Bradford District Children and Young People's Strategic Partnership is aiming to improve the overall health of all children and young people in the District by promoting emotional well being and healthy lifestyle choices. Examples of recent initiatives include increased sports provision in schools and additional support for children in care and those with disabilities.

• Infant Mortality

The Government's Infant Mortality Target announced in February 2001, is: "Starting with children under one year, by 2010 to reduce by at least 10 per cent the gap in mortality between the 'routine and manual' economic group and the population as a whole."

The infant mortality rate for Bradford District fell substantially between 1974 and 2003. However in the period 1999 to 2003 the infant mortality rate had not significantly changed. In the years 2001 – 2003 combined Bradford babies were 1.7 times more likely to die in their first year than babies in England and Wales as a whole. This gives an infant mortality rate of 9.0 infant deaths per 1,000 live births in the Bradford District compared with 5.4 per 1,000 live births in England and Wales. (2001 – 2003 figures are used, as uncertainty exists about the infant mortality figures for 2004)

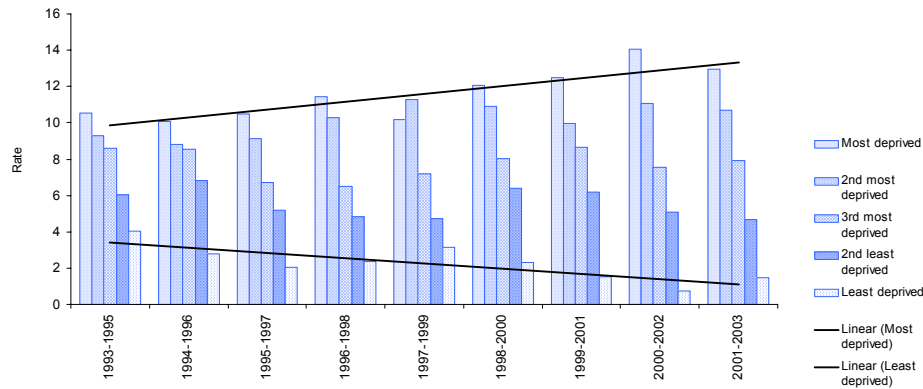
Within the district, the wards of Bradford Moor, Toller, Manningham, and City had the highest infant mortality rates; and Craven, Ilkley, Wharfedale, Baildon, Bingley and Worth Valley had the lowest. From 1993 – 2003 as a whole, a baby born in the most deprived fifth (quintile) in the District was almost five times as likely to die in their first year compared to the least deprived fifth (quintile).

An independent commission established in 2004 to examine the issue of Infant Mortality within the District published an interim report in 2006, which found that:

- Poverty and disadvantage remain strongly associated with infant mortality for babies born to both Pakistani-origin mothers and white mothers.
- 88% of Pakistani-origin babies and 41% of white babies are born into the most deprived two-fifths of neighbourhoods.
- For both populations, a reduction in the number of very low birthweight babies would significantly reduce the number of babies who die in their first year of life.

- The trend lines on the graph below demonstrates that the gap in infant mortality between the most and least deprived areas of the Bradford District widened between 1993 to 1997 and 1999 to 2003.

Infant mortality in Bradford by Fifths (quintiles) of Deprivation 1993 - 2003



• Teenage Pregnancy

Teenage pregnancy can be linked to deprivation; girls from poorer backgrounds are ten times more likely to become teenage mothers than girls from professional backgrounds. One in every ten babies born in England is to a teenage mother, and one fifth of all births to mothers under the age of 18 are second pregnancies. The infant mortality rate for babies born to mothers aged under 18 is twice the national average.

One of the Government's key targets is to halve the rate of conceptions to women aged under 18 in England by the year 2010.

In Bradford District there has been an 11% reduction in the rate of teenage pregnancy since 1998. In 2005, the national rate of pregnancies to women under 18 was 41.1 per 1,000 women aged 15-17. The rate for Bradford District was 50.1, higher than both the national and West Yorkshire rate.

Pregnancy rate per 1,000 female population aged 15-17 2000 - 2005

	2000	2001	2002	2003	2004	2005
England	43.6	42.5	42.6	42.1	41.5	41.1
West Yorkshire	47.7	46.4	45.7	44.2	45.9	48.1
Bradford	48.9	47.4	46.4	45.2	44.1	51.0
Calderdale	43.6	51.2	37.5	50.4	43.0	42.5
Kirklees	43.6	41.2	46.1	41.9	43.6	43.3
Leeds	49.8	46.8	47.5	41.1	46.5	49.0
Wakefield	48.7	47.1	45.0	48.1	52.0	51.0

Source: <http://www.everychildmatters.gov.uk>

- **Obesity**

The 2004 Health Survey for England shows that among adults there had been no significant change since 2003, 43% of men and 33% of women are overweight. There was, however, a marked increase in the number of adults who were obese, these had increased from 13.2% of men in 1993 to 23.6% in 2004, and from 16.4% of women in 1993 to 23.8% in 2004. This means that the health of approximately 2/3 of men and half of all women is at risk through their being overweight.

Between 1995 and 2001, mean Body Mass Index (BMI) increased among boys (from 17.6 to 18.1) and girls (from 18.0 to 18.4) aged 2 – 15. Among girls aged 0 – 15, mean BMI increased from 18.2 in 2001 to 19.0 in 2004, but there was no significant change for boys over this period.

A new cross-departmental Public Service Agreement (PSA) target was announced in May 2004: 'to halt the rise in obesity among children under 11 by 2010, in the context of a broader strategy to halt obesity in the population as a whole.'

Data provided by Bradford Health Informatics Service about obesity in children in 2006 shows that children are more likely to be overweight or obese by the time they reach 11, and that boys are slightly more likely than girls to be overweight or obese.

Weights for five year olds in Bradford District in 2006

	Underweight	Normal weight	Overweight	Obese
Males	5% (120)	72% (1878)	11% (295)	12% (298)
Females	4% (101)	75% (1918)	11% (267)	10% (256)
'Expected'	5%	80%	10%	5%

Source: Bradford Health Informatics Service

Weights for eleven year olds in Bradford District in 2006

	Underweight	Normal weight	Overweight	Obese
Males	4% (118)	62% (1696)	14% (392)	20% (536)
Females	5% (133)	63% (1633)	13% (333)	19% (481)
'Expected'	5%	80%	10%	5%

Source: Bradford Health Informatics Service

Health Needs Assessments within schools in Airedale PCT reveals that:

- 50% of 11-12 year olds and 59% of 14-15 year olds eat two or less portions of fruit and vegetables daily
- 18% of 11-12 year olds and 29% of 14-15 year olds do not eat breakfast regularly.

Staying safe

In 2001, the most significant cause of death or serious injury amongst children and young people was from accidents. The number of deaths or serious injuries of children or young people declined from 76 in 2002/3 to 39 in 2004/5

- the lowest figure since 1974. Taking the 1995 – 98 baseline figure of 69, this is a 43% reduction (the target is 50% by 2010).

The number of repeat incidents of young people going missing in the District increased last year, from 180 in 2004 to 199 in 2005.

Educational Attainment

School children take tests at the end of each key stage of their school careers: Key Stage One (for seven years olds), Key Stage Two (eleven year olds), Key Stage Three (fourteen year olds), Key Stage Four (sixteen year olds taking GCSEs, or GNVQs), and Key Stage Five (eighteen year olds taking GCE A Levels, advanced GNVQs or AVCEs).

Overall performance of school pupils 2005 - 2006

School children take tests at the end of each key stage of their school careers include: Key Stage One (for seven years olds), Key Stage Two (eleven year olds), Key Stage Three (fourteen year olds), Key Stage Four (sixteen year olds taking GCSEs, or GNVQs), and Key Stage Five (eighteen year olds taking GCE A Levels, advanced GNVQs or AVCEs).

Since 2001, the gap between Bradford's results and the national results has narrowed at all key stages except in mathematics at Key Stage One. This means that, with the one exception, the rates of improvement have been faster in Bradford than nationally.

The most marked improvement has been in 5+ A*-C at GCSE, where the gap has narrowed by 6.1%. The gaps in mathematics and science have been narrowed by over 4% at Key Stages 2 and 3. Least impact has been made on closing the gap in all subjects at Key Stage 1 and in English at Key Stages 2 and 3.

• Key Stage 2

The benchmark at Key Stage 2 is the percentage of pupils scoring level 4 or better. The National Floor Target for 2006 was that at least 65% of pupils reach level 4.

Percentage of pupils attaining level 4 and level 5 at Key Stage Two

Subject	Summer 2005 results		Summer 2006 results	
	LEA	National	LEA	National
English at level 4*	73	79	73	79
English at level 5	-	-	26	32
Maths at level 4*	68	75	68	75
Maths at level 5	-	-	26	33
Science at level 4*	78	87	79	87
Science at level 5	-	-	35	46

The English and mathematics level 4+ results are on a par with 2005, although science has decreased by 1%. The gap between Bradford's results and those nationally remains at the same level in mathematics and has increased

by 0.2% in English and 0.7% in science.

• **Key Stage 4**

The majority of students take GCSEs, but an increasing number take GNVQ at foundation or intermediate level. (For this table, the results of the GNVQs have been expressed as GCSE equivalents and combined with the GCSEs to give overall percentage scores). The new benchmark at Key Stage 4 is the percentage of pupils achieving five or more A*-C grades including English and mathematics. In 2006 Bradford's performance improved by 0.7%, the improvement nationally was 1.5%.

The proportion of students achieving 5 or more GCSEs at grades A-C* rose by 3.4% in 2006 to 50.2%. Over three years Bradford's results have improved by 10.4 percentage points which ranks the local authority in the top quartile for improvement when compared to other local authorities.

Attainment at GCSE (Key Stage 4)

Subject	Summer 2005 results		Summer 2006 results	
	Bradford	National	Bradford	National
% 5+ A*-C GCSE including English and mathematics	32.3%	44.3%	34.0%	45.8%
% 5+ A*-C GCSE	46.8%	57.1%	50.2%	59.2%
% 5+ A*-G GCSE	85.8%	88.9%	84.8%	90.5%
% 1+ A*-C GCSE	93.7%	N/A	95.4%	97.8%

Overall there was a 1% decrease in the percentage achieving five or more A*-G grades and a 1.7% improvement in the percentages achieving one or more passes at any level.

- **Key Stage 5**

Key Stage 5 is more usually known as GCE 'A' level. From 2006 the A level results now include many vocational qualifications (similar to the GCSE level qualifications) This led to a new points score for A levels being devised by the Qualifications and Curriculum Authority. An A level at A grade is now worth 270 points. For this reason now comparisons have been made with previous years. There are no statutory targets at this key stage. The average point score for Bradford students was lower than the West Yorkshire Learning Skills Council average and the national average.

General and vocational A/AS or equivalent achievement 2006			
	Bradford LA average	West Yorkshire LSC average	England average
Average point score per student	646.8	723.4	721.5
Average point score per exam entry	190.7	198.5	206.2

- **Performance by Ethnicity and Gender**

There are differences between boys' and girls' performances at all key stages, both nationally and locally.

At key stage 2 girls outperformed boys in reading, writing and English at Level 4+ and Level 5+, although boys outperform girls at both levels in mathematics.

Within ethnic groups, the patterns tend to be much the same, in that; for example, girls of any ethnic origin usually do better in English than boys of the same ethnicity but about the same in Maths and Science (except at Key Stage 1 where girls usually out perform boys in all subjects).

GCSE results show that girls generally achieve higher scores than boys. In 2006 the gap between girls and boys performance was 8.8%, the comparative figure in 2005 was 10.7% - although both genders have improved, boys improvement is greater and so the gender gap has closed slightly.

All pupils at 5+ A*-C rose by 3.4%. Pakistani pupils narrowed the gap by improving by 6%. However the gap for Bangladeshi pupils widened and their performance declined by 5%.

Not in Employment, Education or Training

Although most young people find work or go onto further learning or training, there are a number of 16 – 18 year olds not participating in either at any time, the NEET group. In November 2006 Bradford had the highest percentage. Figures for January 2007 show a fall of one percentage point.

Percentage of young people classified as NEET at November 2006

Bradford	9.8%
Calderdale	9.2%
Kirklees	9.3%
Leeds	9%
Wakefield	9.7%
West Yorkshire	9.4%

Source: Connexions

Progression to further and higher education

Bradford District has the second lowest proportion of year 11 (16 year olds) staying in learning in West Yorkshire in 2005.

Percentage of year 11 students staying in learning in West Yorkshire

Local Authority	% Staying in learning	
	2005	2006
Bradford	81.8%	84.4%
Calderdale	88.1%	86.3%
Kirklees	84.7%	86.4%
Leeds	85.2%	N/A
Wakefield	81.7%	N/A

Source: Connexions

Low numbers of Bradford students progress to Higher Education. Overall about 11.2% of young people aged 18 were in HE at January 2007, and a further 33% continued in Further Education at school or college. The Government's target is that 50% of all 18-30 year olds should be participating in Higher Education by 2010.

Youth Offending

The number of first time youth offenders in the District shows a rising trend, increasing from 393 in 2003 to 471 in 2004. This increase is heavily influenced by improvements in local crime detection rates and the impact of the Government's recorded crime initiative 'Narrowing the Justice Gap'.

There is a downward trend in re-offending rates, well ahead of national targets. 47.1% of the 2001 cohort of youth offenders re-offended, compared to 33.4% of the 2004 cohort.

The 18 -21 young adult age group had the highest rate of offending for all major categories of crime committed in the District in 2003/4, with 23% of such offences committed by young people under 18 years old.

The age profile of those involved in vehicle crime was particularly young – 39% of offenders were under 18 and 70% were under 22.

The number of people supervised by the Youth Offending Team, that are accessing in some way, full-time education, training and employment shows an encouraging trend during 2004, rising from 42% in the second quarter, to 53% in the last quarter of 2004.

Bradford and Keighley Youth Parliament

This is one of a number of initiatives to encourage the positive involvement of children and young people in their local communities and decision-making. Members for the third Youth Parliament were elected in January 2007.

Their role is to:

- Speak on behalf of young people in the District
- Engage in wider politics
- Support various young people's groups
- Create a sense of belonging to the city

Children Act 2004

The Children Act of 2004 has five outcomes:

- To be healthy,
- Stay Safe,
- Enjoy and achieve (through learning)
- Make a positive contribution (to society)
- Achieve economic well-being.

The Government Strategy 'Every Child Matters' requires that all organisations which provide services for children work together in more integrated and effective ways

The Children and Young People's Strategic Partnership in partnership with the Council, health services, the voluntary and community services and other stakeholders is taking forward Bradford's response to "Every Child Matters" and developing Children's Trust arrangements and the local "Children's Plan" in response to consultations, needs analysis and the outcomes of the 2005 Annual Performance Assessment

More information

For more information from the 2001 Census results for Bradford:

<http://www.bradfordinfo.com/census/Census.cfm>

Education in Bradford

<http://www.educationbradford.com>

Department for Education and Skills

<http://www.dfes.gov.uk>

Learning and Skills Council – West Yorkshire

<http://www.lsc.gov.uk/westyorks/Corporate/workingtogether.htm>

Every child matters

<http://www.everychildmatters.gov.uk/>

This chapter was last updated: 28/2/2007