

## Bingley Rural Ward Profile Supplement

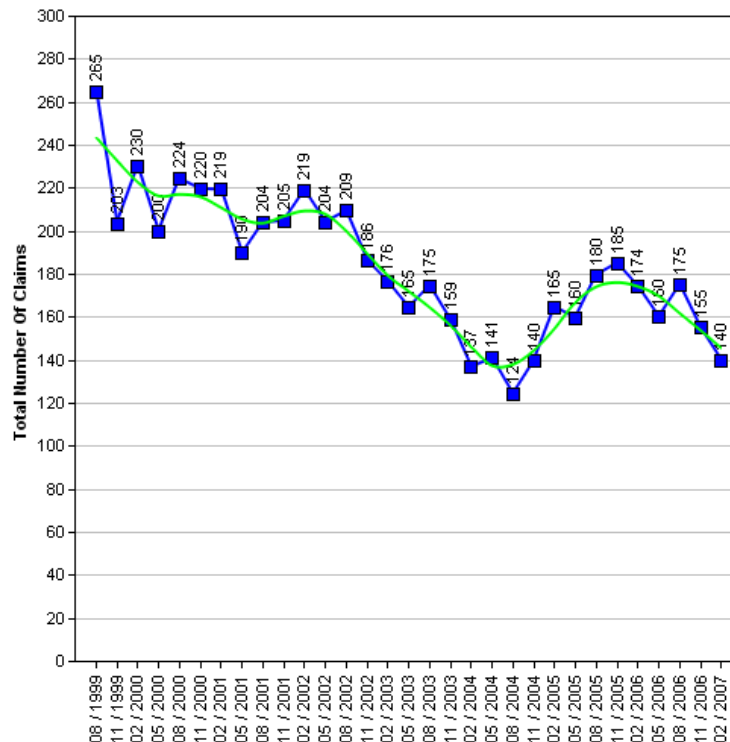
The Census is a survey of all people and households in the country that takes place every 10 years. The Census was last carried out in 2001, with results published in 2003. The next Census is due in 2010, with results expected in 2013. Consequently the actual data cannot be updated in intervening years.

Work has been underway for some time to produce a range of alternative datasets for Bradford to supplement the 2001 Census data with more current and relevant information, which will better describe conditions and progress across the District. This supplement provides a taster of that work.

It is the intention to consult Elected Members on themes and priorities. Regular data updates will then be incorporated into the intranet 'Members Information System' supported by improved analysis and narrative. Periodic snapshots in paper document form will continue to be available.

### Job Seekers Allowance

The 1991 to 2006 Job Seekers Allowance data give an insight into the number of claimants under pensionable age who are available for, and actively seeking work of at least 40 hours a week.



### Job Seekers Allowance Claimants

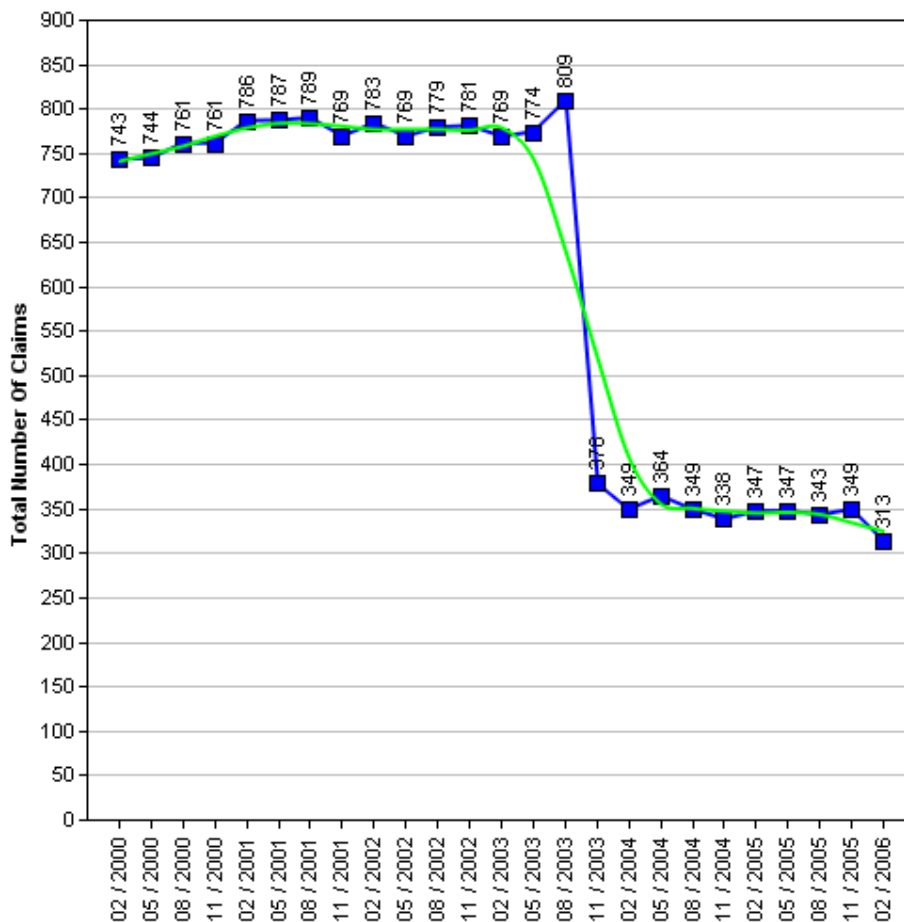
	1999	2000	2001	2002	2003	2004	2005	2006	2007
Quarter 1 (February)	-	230	219	219	176	137	165	174	140
Quarter 2 (May)	-	200	190	204	165	141	160	160	-
Quarter 3 (August)	265	224	204	209	175	124	180	175	-
Quarter 4 (November)	203	220	205	186	159	140	185	155	-



## Income Support

The 2000 to 2006 Income Support data give an insight into the number of claimants between the age of 16-59 who have a low income, don't have savings of £16,000 or more, are not working, work on average less than 16 hours a week, or are unable to work because they are:

- A Lone parent
- Registered sick or disabled
- A student and either a lone parent or disabled
- Or caring for someone who is sick or elderly



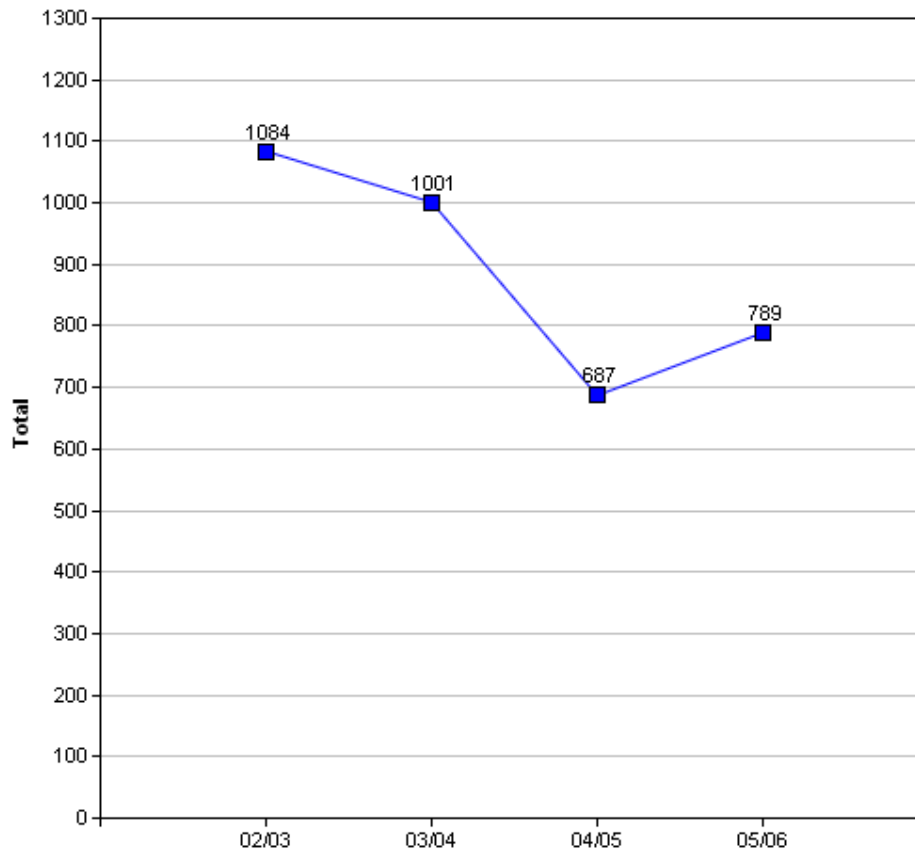
**WARNING:** In the Income Support table there is a drop in the number of claimants between the months of August 2003 and November 2003. The explanation for this is because "from October 2003, Income Support for pensioners was replaced by 'Pension Credit'." (Source: [www.mind.org.uk](http://www.mind.org.uk)).

### Income Support Claimants

	2000	2001	2002	2003	2004	2005	2006
Quarter 1 (February)	-	786	783	769	349	347	313
Quarter 2 (May)	743	787	769	774	364	347	-
Quarter 3 (August)	744	789	779	809	349	343	-
Quarter 4 (November)	761	769	781	378	338	349	-

## Crime

The Crime Data is based on the Crime Domain from the Indices of Deprivation 2004. The Crime Domain consists of 33 categories of recorded crime which are then grouped to form 4 composite indicators: burglary, criminal damage, theft and violence. This report gives an insight into the number of offences committed within the selected area and compares this with the Bradford district. The data is displayed for each year by composite indicator.

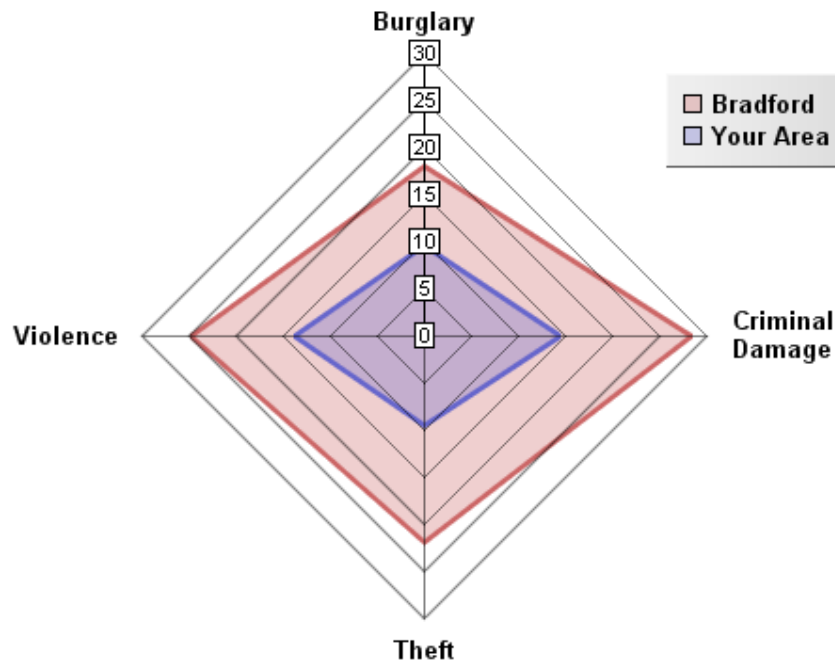


### Overall Crimes per Year

Year	Selected Area			Bradford District		
	No.Offences	Change	% Change	No.Offences	Change	% Change
2002/03	1,084			49,264		
2003/04	1,001	-83	-7.7%	48,973	-291	-0.6%
2004/05	687	-314	-31.4%	40,747	-8,226	-16.8%
2005/06	789	+102	+14.9%	43,562	+2,815	+6.9%

The pattern of crime in the Bingley Rural Ward has broadly followed a similar trend to the district. In 2004/05 numerous district wide initiatives from West Yorkshire Police and the District Crime and Disorder Reduction Partnership yielded significant reductions in crime across most categories. This was an exceptional year for crime reduction and such significant reductions have proven to be unsustainable in the following years. There has still been a 27.2% decrease in crime between 2002 and 2006. It is important to note that ID2004 Crime Domain definition of crime is limited to a subset of crime. A more accurate picture can be obtained by looking at Overall Crime Levels in the district.

## 05/06 Comparison with District (Rate per 1000 population)

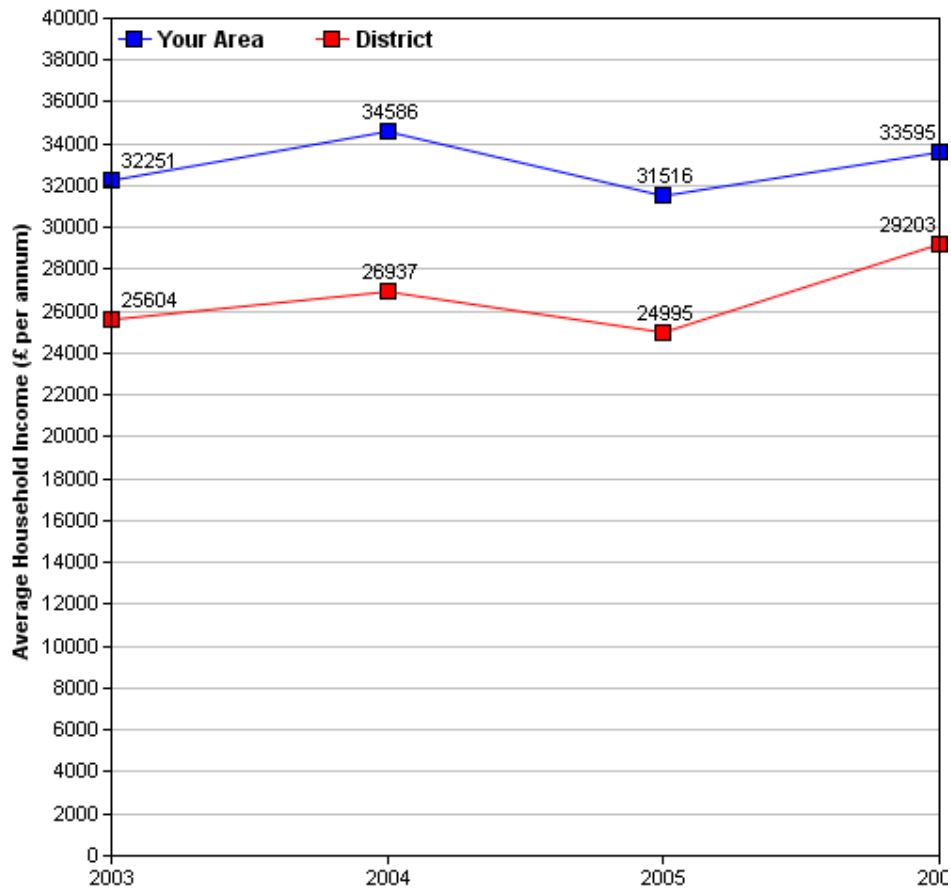


The above crime radar graph compares four variables of crime, per thousand population for your area, with that of the Bradford district. The pink line indicates the Bradford District rate per thousand population and the blue line represents the per thousand population rate for your area. The radar graph allows us to see that all four-crime variables in your area are well below those of the district average. The radar graph also allows you to see which crime variables are closer or further from the district rate, by comparing the gap between the blue and pink lines. Burglary (10 per thousand population) for your area is well below the district rate (17.5 per thousand population). On all four-crime variables Bingley Rural is significantly below that of the Bradford District average. This may well reflect the general rural nature, higher prosperity and lower levels of deprivation of this area compared with more urban areas of the district.

## Income

Information relating to income is derived from data supplied by CACI called 'PayCheck', which provides estimates of mean household income for every postcode in the UK. Unfortunately, it is not possible to use PayCheck data to examine changes in income over time, due to changes in data collection methods. However, it is possible to compare figures from different geographic areas (i.e. Ward and District) for the same time period, as they are derived using the same data collection method.

(For more information on PayCheck data please see [www.caci.co.uk](http://www.caci.co.uk).)



You will notice that your area has an overall higher house hold income between 2003 and 2006. However this gap is slowly closing towards the end of 2006.

### Overall Income by Year

	2003	2004	2005	2006
Mean per Annum	£32,251.02	£34,586.42	£31,516.46	£33,594.63
Mean per Annum (District)	£25,604.05	£26,936.70	£24,995.30	£29,203.12

## Ethnic Diversity

This data comes from the 1991 and 2001 Censuses and shows the diversity of ethnic groups within the Bradford District. By comparing the 1991 Census with the 2001 Census we are able to compare the area over time. At both the 1991 (99.1%) and 2001 (97.9%) Census the Bingley Rural ward was almost completely White.

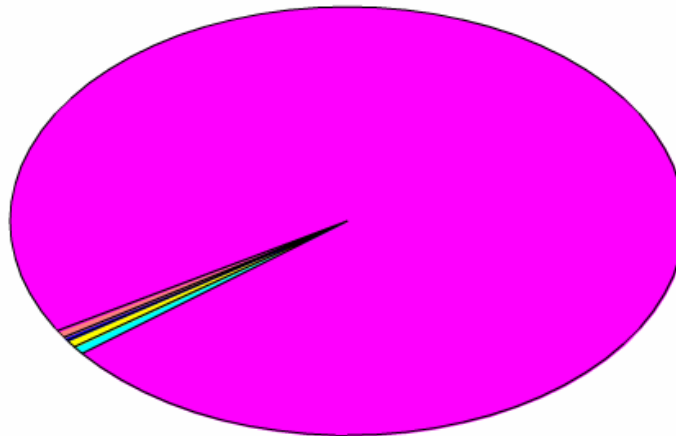
### Ethnic Diversity 1991

	Number	Percentage
White	16,241	99.1%
Asian	52	0.3%
Black	22	0.1%
Other	68	0.4%

### Ethnic Diversity 2001

	Number	Percentage
White	16,267	97.9%
Mixed	89	0.5%
Asian	155	0.9%
Black	22	0.1%
Other	76	0.5%

■ Bangladeshi	0(0%)
■ Black or Black British	21(0%)
■ Indian	62(0%)
■ Mixed(1)	88(1%)
■ Pakistani	92(1%)
■ White	16,267(98%)
■ Other ethnic group	75(0%)



## Travel to Work (Census 2001)

This report provides information from the 2001 Census. It has details about the people who travel to and from the area to go to work, and their method of getting there.

### Travel from Bingley Rural

#### Totals

Total People travelling from Area	Distance Travelled (in Km)					
	Average (mean)	Maximum	Standard Deviation	Standard Deviation (of the population)	Variance	Variance (of the population)
8,468	10	404	33	33	1,093,638	1,093,588
<b>Method of travel to work</b>						
Works mainly at or from home	Public Transport			Bicycle	On Foot	Other
	Train	Bus etc	Taxi			
854	145	674	21	51	520	18
<b>By Car</b>				<b>Motorcycle etc</b>		
<b>As driver</b>		<b>As passenger</b>				
5,555		559		69		

#### By Local Authority

Destination Local Authority	Total People travelling from Area	Distance Travelled (in Km)	
		Average (mean)	Maximum
Bradford	6,873	5	16
Leeds	616	19	34
Kirklees	313	11	22
Calderdale	178	18	29
Wakefield	124	16	25
Harrogate	55	31	45
Craven	24	55	59
York	18	23	28
Sheffield	18	28	36
Pendle	15	48	56
Hillingdon	12	53	58
Barnsley	12	56	57
Angus	9	269	269
City of London	9	283	286
Manchester	9	60	63

## Travel to Bingley Rural

### Totals

Total People travelling to Area	Distance Travelled (in Km)					
	Average (mean)	Maximum	Standard Deviation	Standard Deviation (of the population)	Variance	Variance (of the population)
4,077	8	310	37	37	1,356,470	1,356,358
<b>Method of travel to work</b>						
Works mainly at or from home	Public Transport			Bicycle	On Foot	Other
	Train	Bus etc	Taxi			
854	26	361	14	24	464	12
<b>By Car</b>				<b>Motorcycle etc</b>		
<b>As driver</b>		<b>As passenger</b>				
2,010		285		27		

### By Local Authority

Origin Local Authority	Total People travelling from Area	Distance Travelled (in Km)	
		Average (mean)	Maximum
Bradford	3,600	3	16
Leeds	109	16	31
Calderdale	108	11	19
Kirklees	53	18	26
Craven	45	14	21
Wakefield	18	32	41
Harrogate	15	28	43
Harrow	12	268	270
Sheffield	9	52	55
Barnsley	9	38	40
Rochdale	9	23	24
Brent	6	274	275
Newcastle-under-Lyme	6	94	95
Pendle	6	21	21
Walsall	6	135	135

Of the people who travel to work from Bingley Rural, over 72.2% travel by car (65.6% as drivers and 6.6% as passengers), 8.1% by motorcycle and 0.2% travel by other means (including train, buses, taxis, bicycle, on foot and other modes). The remaining 10.1% work predominantly from home.

Over 52% more people travel from Bingley Rural than those that travel to Bingley Rural.

Of the people who travel to work in Bingley Rural, over 56.3% travel by car (49.3% as drivers and 7% as passengers), 0.7% by motorcycle and 22.1% travel by other means (including train, buses, taxis, bicycle, on foot and other modes). The remaining 20.9% work predominantly from home.

## Indices of Deprivation 2004 (ID2004)

The Index of Multiple Deprivation 2004 (IMD 2004) is a Super Output Area (SOA) level measure of multiple deprivation. England is divided into 32,482 SOAs, which are small areas containing an average of 1,500 residents. The IMD 2004 project gives a score and rank to each SOA for seven areas of deprivation:

- Income deprivation
- Employment deprivation
- Health deprivation and disability
- Education, skills and training deprivation
- Barriers to Housing and Services
- Living environment deprivation
- Crime

Also, each SOA has been given an overall score and rank which takes into account all seven indices, and this is known as the Index of Multiple Deprivation 2004.

Ranks vary from 1 to 32,482, with 1 being the most deprived. Higher scores indicate that areas are more deprived. When comparing the deprivation of different areas, it is better to look at the rank than the score. Bradford Council has been able to use the Maps and Stats web-based GIS system ([www.mapsandstats.com](http://www.mapsandstats.com)) to combine scores for the SOAs that fall within the wards, and hence estimate the Indices of Deprivation at ward level.

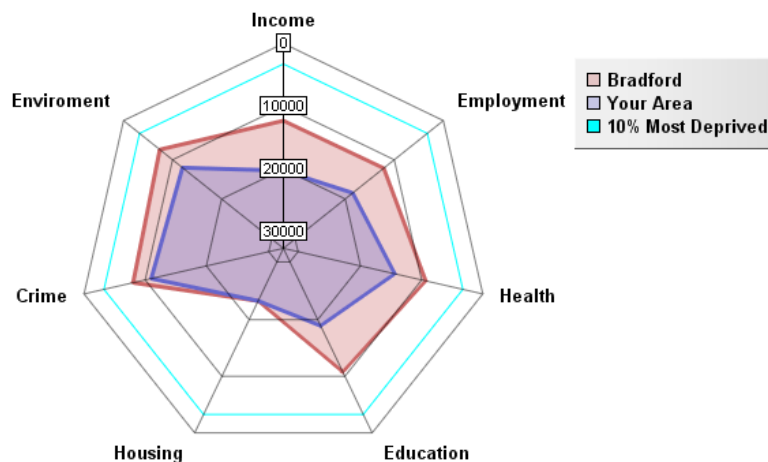
### Index of Multiple Deprivation 2004

	ID 2004 Overall Rank (Average)	ID 2004 Overall Score
E01013119 in East Riding of Yorkshire LA	18343	14.82
<b>Bingley Rural Ward</b>	<b>18343.09</b>	<b>15.82</b>
E01031099 in Nuneaton and Bedworth LA	18344	14.82
<b>Average for Bradford</b>	<b>10656.03</b>	<b>32.93</b>

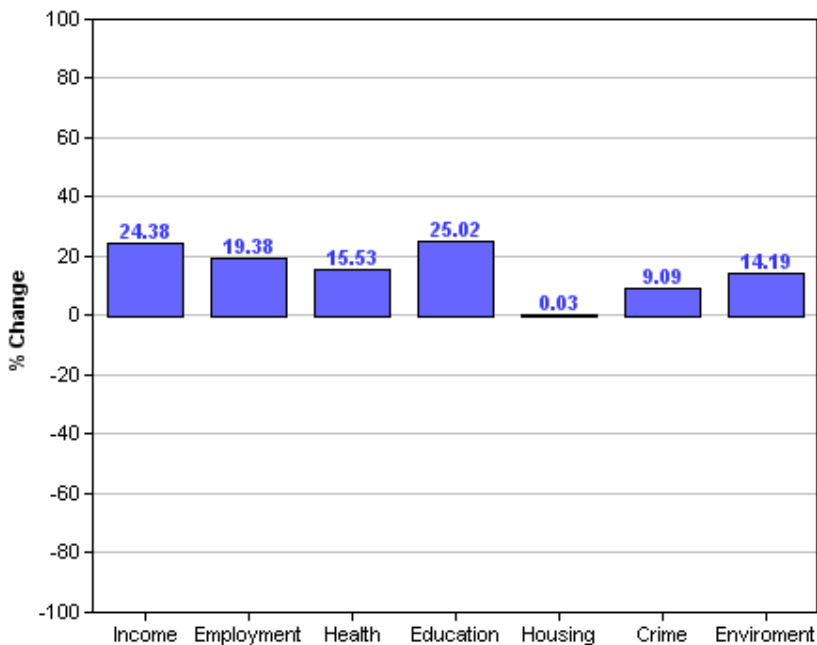
This table shows the average ranks and scores for the Bingley Rural ward. The rows above and below Bingley Rural show which SOAs in England have the most similar ranks to this ward, and are therefore considered to have the most similar levels of deprivation. It is important to note, however, that these areas may be deprived for different reasons.

### Area Rank against Average Bradford

The following radar graph and bar chart indicate that the Bingley Rural ward is relatively less-deprived compared to the rest of the District on all domain indices of deprivation. Only in the Housing domain of the Index of Deprivation 2004 is Bingley Rural at a similar level of deprivation to that of the Bradford District, although this is likely to reflect the low level of deprivation within Bradford for this domain. This is due mainly to the urban nature of Bradford, which means that there are amenities relatively close to where people live and is not necessarily due to a high standard of house stock. The difference between the Bradford District average and Bingley Rural is greatest for both Education (25.0) and Income (24.3) domains. This indicates that on Education and Income Bingley Rural is least deprived compared to the rest of the district. Overall Bingley Rural is reasonably balanced in terms of deprivation with only the Environment, Crime and Health being slightly higher than the rest of the deprivation domains for this area, these may of course be linked.



## Percentage Difference between Area Rank and Average Bradford Rank



### Other dataset currently being investigated/acquired:

#### Health

Low birth weight  
 Death Rates  
 Smoking attributable health admissions  
 Perception Surveys (Speak-out)

#### Education

%5 A – C GCSE's (Inc. Maths and English)  
 Key Stage Results  
 Adult qualifications  
 Truancy

#### Economy

Benefit measures & Incapacity benefit  
 Income levels (Household)  
 NEET's  
 Business start-up survival rates

#### Crime

Criminal damage  
 Burglary  
 ASB (Needs clarifying)  
 Youth offending  
 Road traffic accidents (RTA)


#### Liveability

House prices  
 Void properties  
 Cleanliness  
 Open spaces  
 Housing condition

#### Stronger Communities

Voting rates

**Plus many other council datasets as they become available through the GIS strategy.**

	<p>All 30 Ward profiles and supplements can be found at:  <a href="http://www.bradfordinfo.com/census/WardProfiles.cfm">http://www.bradfordinfo.com/census/WardProfiles.cfm</a></p> <p>This bulletin was produced by the <b>Research and Consultation Service</b>,              City of Bradford Metropolitan District Council.              Email: <a href="mailto:stephen.elves@bradford.gov.uk">stephen.elves@bradford.gov.uk</a> Tel: 01274 43 7269              August 2007</p>
---	--