

Craven Ward Profile Supplement

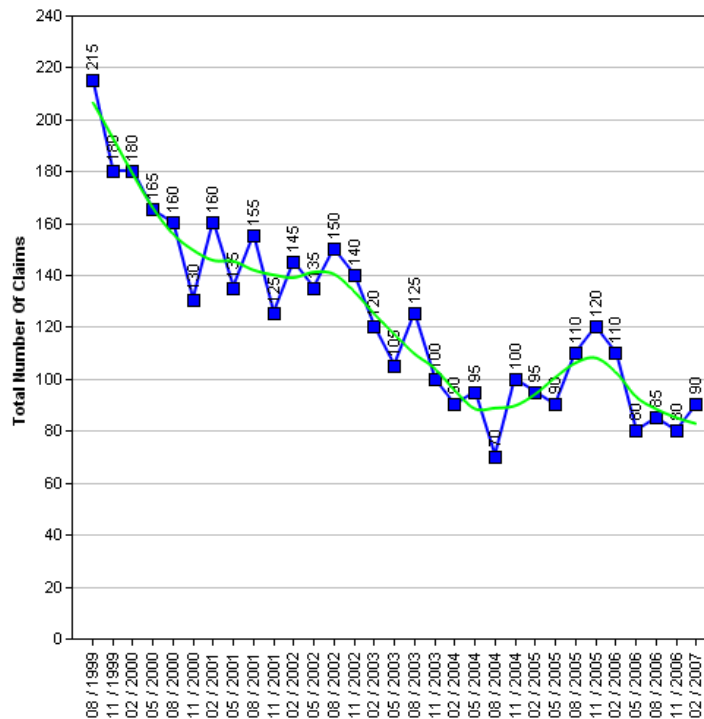
The Census is a survey of all people and households in the country that takes place every 10 years. The Census was last carried out in 2001, with results published in 2003. The next Census is due in 2010, with results expected in 2013. Consequently the actual data cannot be updated in intervening years.

Work has been underway for some time to produce a range of alternative datasets for Bradford to supplement the 2001 Census data with more current and relevant information, which will better describe conditions and progress across the District. This supplement provides a taster of that work.

It is the intention to consult Elected Members on themes and priorities. Regular data updates will then be incorporated into the intranet 'Members Information System' supported by improved analysis and narrative. Periodic snapshots in paper document form will continue to be available.

Job Seekers Allowance

The 1991 to 2006 Job Seekers Allowance data give an insight into the number of claimants under pensionable age who are available for, and actively seeking work of at least 40 hours a week.



Job Seekers Allowance Claimants

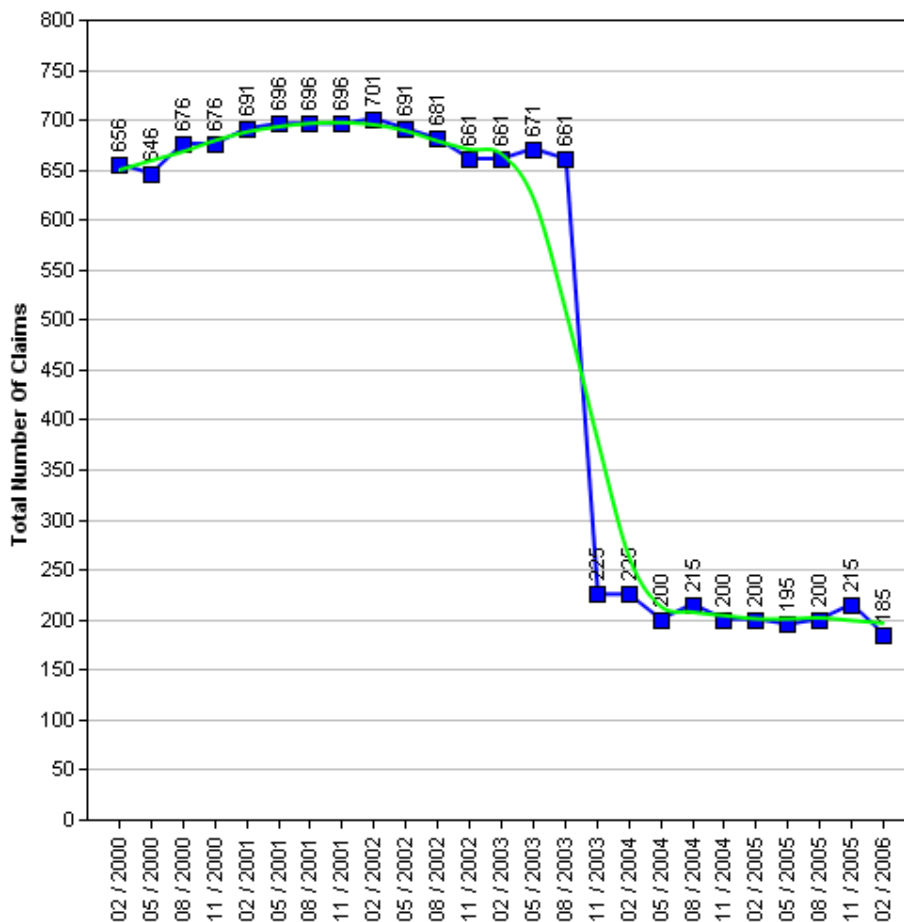
	1999	2000	2001	2002	2003	2004	2005	2006	2007
Quarter 1 (February)	-	180	160	145	120	90	95	110	90
Quarter 2 (May)	-	165	135	135	105	95	90	80	-
Quarter 3 (August)	215	160	155	150	125	70	110	85	-
Quarter 4 (November)	180	130	125	140	100	100	120	80	-



Income Support

The 2000 to 2006 Income Support data give an insight into the number of claimants between the age of 16-59 who have a low income, don't have savings of £16,000 or more, are not working, work on average less than 16 hours a week, or are unable to work because they are:

- A Lone parent
- Registered sick or disabled
- A student and either a lone parent or disabled
- Or caring for someone who is sick or elderly



WARNING: In the Income Support table there is a drop in the number of claimants between the months of August 2003 and November 2003. The explanation for this is because "from October 2003, Income Support for pensioners was replaced by 'Pension Credit'." (Source: www.mind.org.uk).

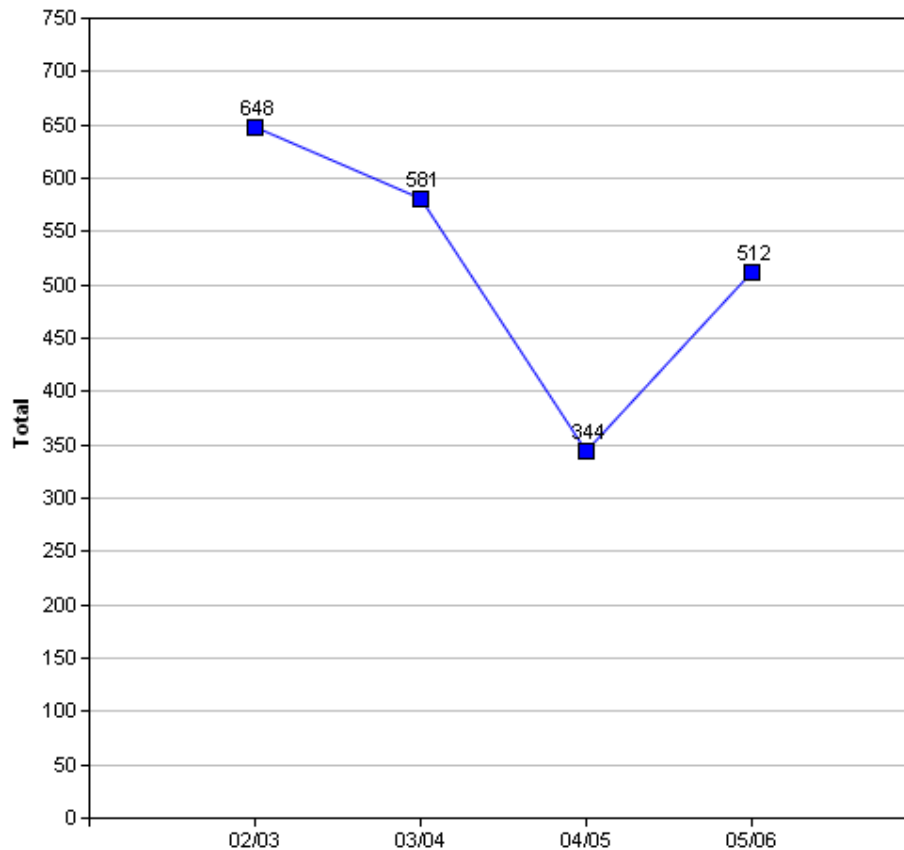
Income Support Claimants

	2000	2001	2002	2003	2004	2005	2006
Quarter 1 (February)	656	691	701	661	225	200	185
Quarter 2 (May)	646	696	691	671	200	195	-
Quarter 3 (August)	676	696	681	661	215	200	-
Quarter 4 (November)	676	696	661	225	200	215	-

The number of people claiming income support has gradually fallen over a six year period, from 2,654 in 2000 to 615 in 2004.

Crime

The Crime data is based on the Crime Domain from the Indices of Deprivation 2004. The Crime Domain consists of 33 categories of recorded crime which are then grouped to form 4 composite indicators: burglary, criminal damage, theft and violence. This report gives an insight into the number of offences committed within the selected area and compares this with the Bradford district. The data is displayed for each year by composite indicator.

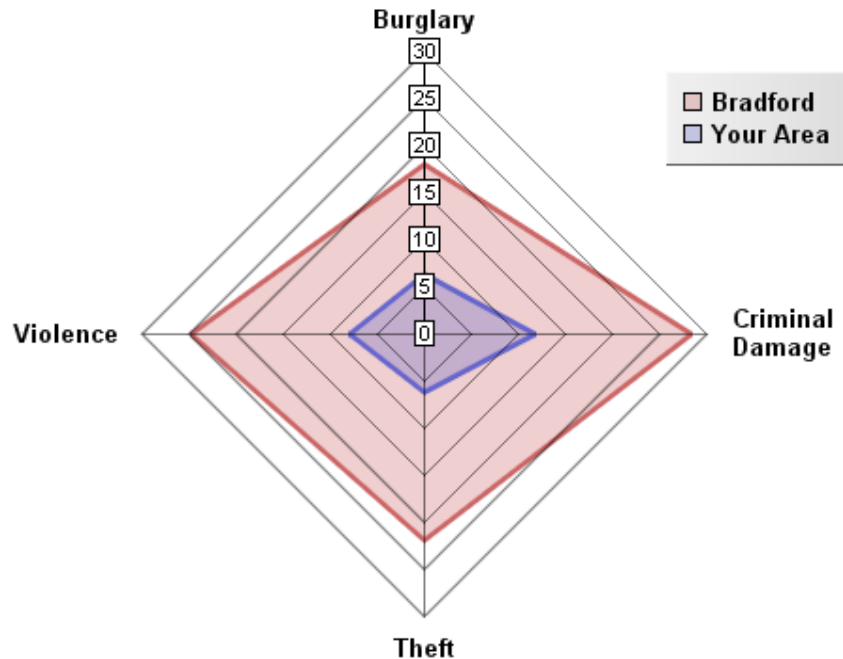


Overall Crime per Year

Year	Selected Area			Bradford District		
	No.Offences	Change	% Change	No.Offences	Change	% Change
2002/03	648			49,264		
2003/04	581	-67	-10.3%	48,973	-291	-0.6%
2004/05	344	-237	-40.8%	40,747	-8,226	-16.8%
2005/06	512	+168	48.8%	43,562	+2,815	+6.9%

The pattern of crime in the Craven Ward has broadly followed a similar trend to the district. In 2004/05 numerous district wide initiatives from West Yorkshire Police and the District Crime and Disorder Reduction Partnership yielded significant reductions in crime across most categories. This was an exceptional year for crime reduction and such significant reductions have proven to be unsustainable in the following years. There has still been a 21% decrease in crime between 2002 and 2006. It is important to note that ID2004 Crime Domain definition of crime is limited to a subset of crime. A more accurate picture can be obtained by looking at Overall Crime Levels in the district.

05/06 Comparison with District (Rate per 1000 population)

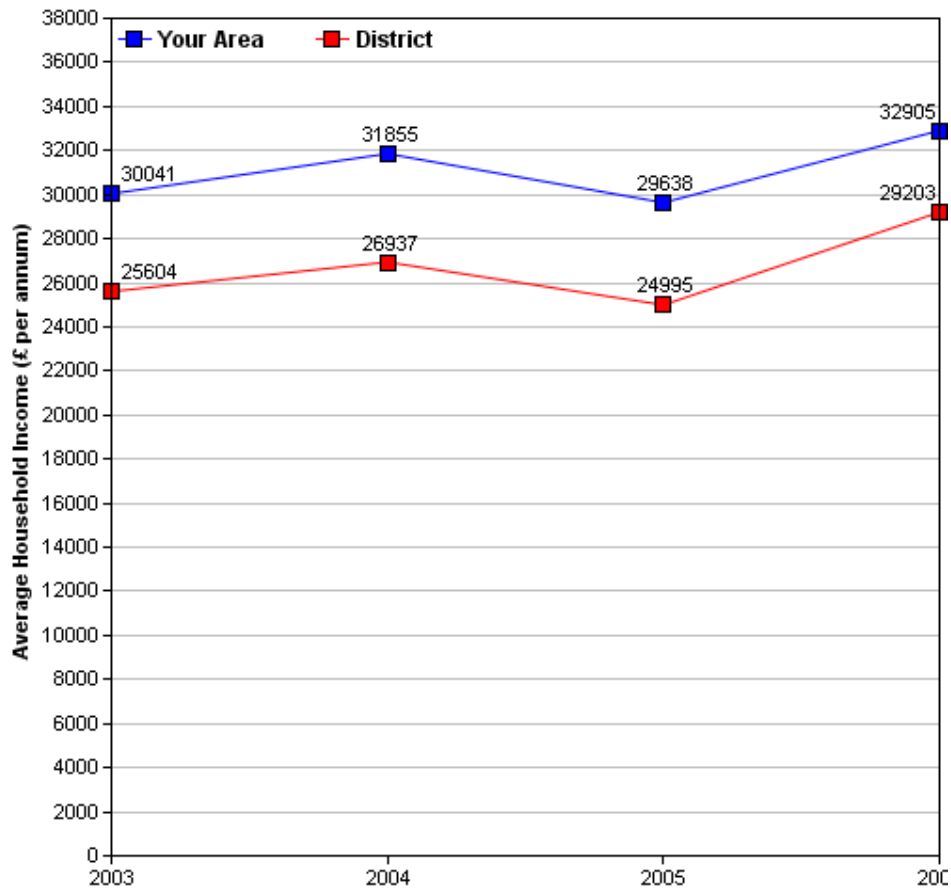


The above crime radar graph compares four variables of crime, per thousand population for your area, with that of the Bradford district. The pink line indicates the Bradford District rate per thousand population and the blue line represents the per thousand population rate for your area. The radar graph allows us to see that three of the crime variables in your area are well below those of the district average. The radar graph also allows you to see which crime variables are closer or further from the district rate, by comparing the gap between the blue and pink lines. Burglary (22.5 per thousand population) for your area is well above the district rate of around 17.5 per thousand population. Violence, theft and criminal damage in your area are similar to that of the district average. The level of crime for your area reflects the general semi-urban characteristic and deprivation levels for this area.

Income

Information relating to income is derived from data supplied by CACI called 'PayCheck', which provides estimates of mean household income for every postcode in the UK. Unfortunately, it is not possible to use PayCheck data to examine changes in income over time, due to changes in data collection methods. However, it is possible to compare figures from different geographic areas (i.e. Ward and District) for the same time period, as they are derived using the same data collection method.

(For more information on PayCheck data please see www.caci.co.uk.)



Overall Income by Year

	2003	2004	2005	2006
Mean per Annum	£30,041.33	£31,854.92	£29,638.00	£32,905.49
Mean per Annum (District)	£25,604.05	£26,936.70	£24,995.30	£29,203.12

Ethnic Diversity

This data comes from the 1991 and 2001 Censuses and shows the diversity of ethnic groups within the Bradford District. By comparing the 1991 Census with the 2001 Census we are able to compare the area over time. At both the 1991 (99.3%) and 2001 (98.3%) Census the Craven ward was almost completely White.

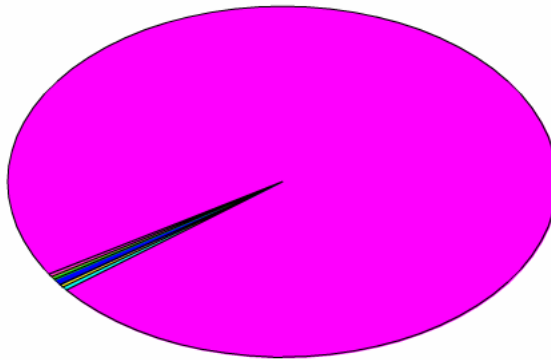
Ethnic Diversity 1991

	Number	Percentage
White	14,209	99.3 %
Asian	48	0.3 %
Black	23	0.2 %
Other	34	0.2 %

Ethnic Diversity 2001

	Number	Percentage
White	15,589	98.3 %
Mixed	54	0.3 %
Asian	150	0.9 %
Black	27	0.2 %
Other	39	0.2 %

Bangladeshi	3(0%)
Black or Black British	26(0%)
Indian	98(1%)
Mixed(1)	54(0%)
Pakistani	47(0%)
White	15,588(98%)
Other ethnic group	38(0%)



Travel to Work (Census 2001)

This data comes from the 2001 Census. It has details about the people who travel to and from the area to go to work, and their method of getting there.

Travel from Craven

Totals

Total People travelling from Area	Distance Travelled (in Km)					
	Average (mean)	Maximum	Standard Deviation	Standard Deviation (of the population)	Variance	Variance (of the population)
8,082	12	379	32	32	1,041,217	1,041,163
Method of travel to work						
Works mainly at or from home	Public Transport			Bicycle	On Foot	Other
	Train	Bus etc	Taxi			
825	384	414	27	30	707	24
By Car			Motorcycle etc			
As driver	As passenger					
5,117	479	63				

By Local Authority

Destination Local Authority	Total People travelling from Area	Distance Travelled (in Km)	
		Average (mean)	Maximum
Bradford	5,562	5	24
Leeds	987	8	44
Kirklees	787	25	39
Calderdale	153	23	43
Wakefield	102	17	27
Harrogate	81	22	29
Craven	81	29	36
York	30	23	29
Sheffield	24	40	43
Pendle	18	35	39
Hillingdon	12	55	58
Barnsley	12	31	34
Angus	12	55	58
City of London	12	58	63
Manchester	9	43	49

Travel to Craven

Totals

Total People travelling to Area	Distance Travelled (in Km)					
	Average (mean)	Maximum	Standard Deviation	Standard Deviation (of the population)	Variance	Variance (of the population)
6,606	8	352	24	24	589,167	589,129
Method of travel to work						
Works mainly at or from home	Public Transport			Bicycle	On Foot	Other
	Train	Bus etc	Taxi			
825	100	419	24	30	724	18
By Car					Motorcycle etc	
As driver		As passenger				
3,963		470			33	

By Local Authority

Origin Local Authority	Total People travelling from Area	Distance Travelled (in Km)	
		Average (mean)	Maximum
Bradford	4,814	4	24
Leeds	1,083	7	46
Calderdale	192	15	23
Kirklees	175	22	38
Harrogate	57	21	25
Craven	54	28	39
Wakefield	33	28	32
Hambleton	24	22	26
Middlesbrough	18	25	30
York	9	32	36
Pendle	6	65	66
Burnley	6	54	54
Blyth Valley	6	56	58
Halton	6	72	72
Manchester	6	59	63

Of the people who travel to work from Craven, over 69.2% travel by car (63.3% as drivers and 0.1% as passengers), 7.8% by motorcycle and 0.2% travel by other means (including train, buses, taxis, bicycle, on foot and other modes). The remaining 10.2% work predominantly from home.

Over 18% more people travel from Craven than those that travel to Craven.

Of the people who travel to work in Craven, over 67.1% travel by car (60% as drivers and 7.1% as passengers), 0.5% by motorcycle and 19.9% travel by other means (including train, buses, taxis, bicycle, on foot and other modes). The remaining 12.5% work predominantly from home.

Indices of Deprivation 2004 (ID2004)

The Index of Multiple Deprivation 2004 (IMD 2004) is a Super Output Area (SOA) level measure of multiple deprivation. England is divided into 32,482 SOAs, which are small areas containing an average of 1,500 residents. The IMD 2004 project gives a score and rank to each SOA for seven areas of deprivation:

- Income deprivation
- Employment deprivation
- Health deprivation and disability
- Education, skills and training deprivation
- Barriers to Housing and Services
- Living environment deprivation
- Crime

Also, each SOA has been given an overall score and rank which takes into account all seven indices, and this is known as the Index of Multiple Deprivation 2004.

Ranks vary from 1 to 32,482, with 1 being the most deprived. Higher scores indicate that areas are more deprived. When comparing the deprivation of different areas, it is better to look at the rank than the score. Bradford Council has been able to use the Maps and Stats web-based GIS system (www.mapsandstats.com) to combine scores for the SOAs that fall within the wards, and hence estimate the Indices of Deprivation at ward level.

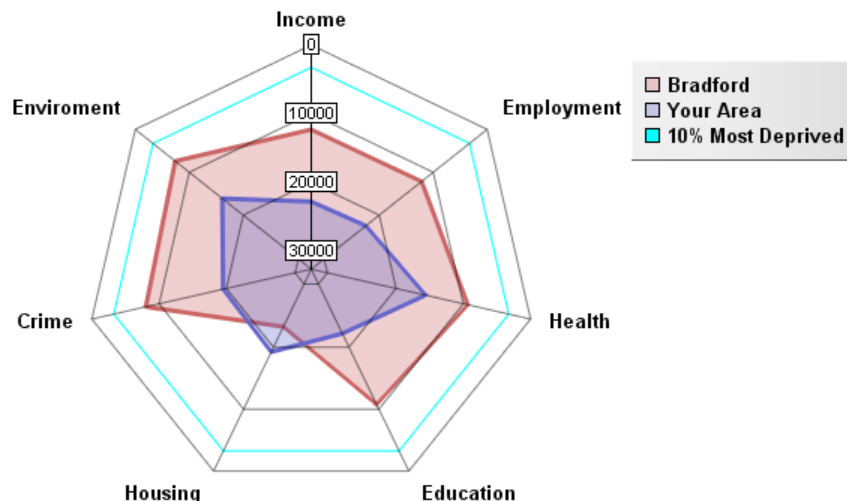
Index of Multiple Deprivation 2004

	ID 2004 Overall Rank (Average)	ID 2004 Overall Score
E01000200 in Barnet LA	21941	11.58
Craven Ward	21941.32	11.84
E01021505 in Castle Point LA	21942	11.58
Average for Bradford	10656.03	32.93

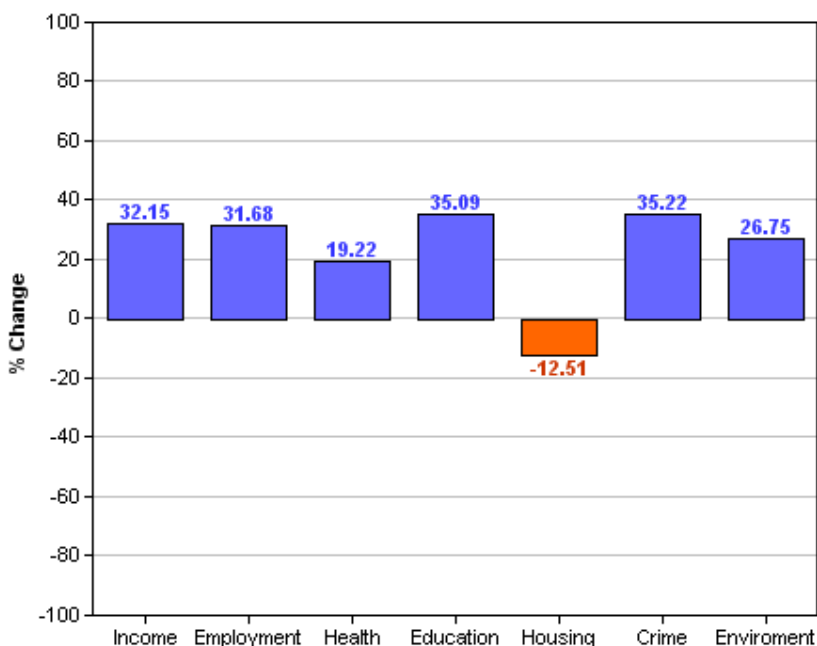
This table shows the average ranks and scores for the Craven ward. The rows above and below Craven show which SOAs in England have the most similar ranks to this ward, and are therefore considered to have the most similar levels of deprivation. It is important to note, however, that these areas may be deprived for different reasons.

Area Rank against Average Bradford

The following radar graph and bar chart indicate that the Craven ward has least deprived on all domains, except for Housing, compared to the rest of the District. Only in the Housing domain of the Index of Deprivation 2004 is Craven experiencing greater levels of deprivation than the Bradford District average (-12.5). This could reflect the rural characteristic of Craven Ward. The difference between the Bradford District average and Craven ward is greatest for Crime (35.2), Education (35.0) and Income (32.1). This indicates that on Crime, Education, and Income domains Craven is least deprived compared to the rest of the district. Overall, the Craven ward is a significantly less deprived ward than compared to the Bradford District in all domains except Housing.



Percentage Difference between Area Rank and Average Bradford Rank



Other dataset currently being investigated/acquired

Health

Low birth weight
 Death Rates
 Smoking attributable health admissions
 Perception Surveys (Speak-out)

Education

%5 A – C GCSE's (Inc. Maths and English)
 Key Stage Results
 Adult qualifications
 Truancy

Economy

Benefit measures & Incapacity benefit
 Income levels (Household)
 NEET's
 Business start-up survival rates

Crime

Criminal damage
 Burglary
 ASB (Needs clarifying)
 Youth offending
 Road traffic accidents (RTA)


Liveability

House prices
 Void properties
 Cleanliness
 Open spaces
 Housing condition

Stronger Communities

Voting rates

Plus many other council datasets as they become available through the GIS strategy.

	<p>All 30 Ward profiles and supplements can be found at: http://www.bradfordinfo.com/census/WardProfiles.cfm</p> <p>This bulletin was produced by the Research and Consultation Service, City of Bradford Metropolitan District Council. Email: stephen.elves@bradford.gov.uk Tel: 01274 43 7269 August 2007</p>
-------------------------------------------------------------------------------------	------------------------------------------------------------------------------------------------------------------------------------------------------------------------------------------------------------------------------------------------------------------------------------------------------------------------------------------------------------------------------------------------------------------------------------------------------------------------------------------------------