

Great Horton Ward Profile Supplement

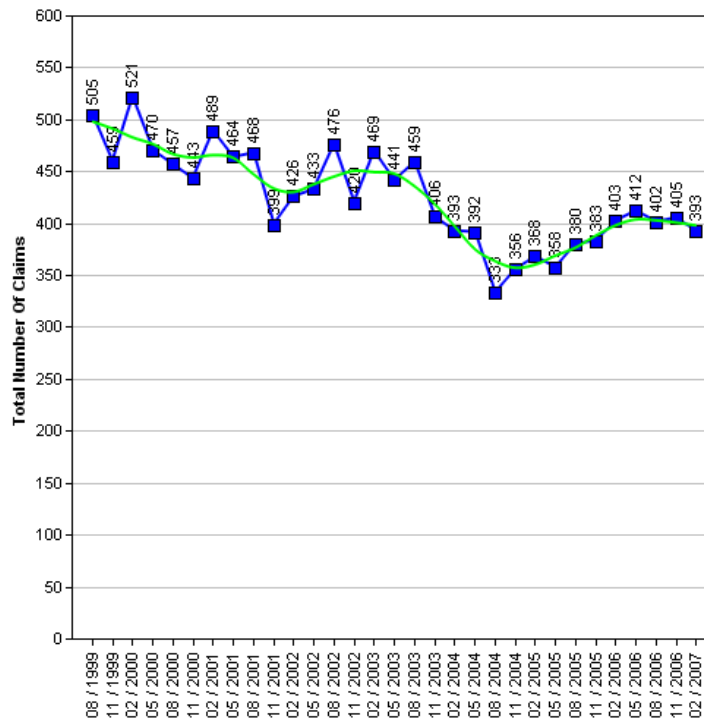
The Census is a survey of all people and households in the country that takes place every 10 years. The Census was last carried out in 2001, with results published in 2003. The next Census is due in 2010, with results expected in 2013. Consequently the actual data cannot be updated in intervening years.

Work has been underway for some time to produce a range of alternative datasets for Bradford to supplement the 2001 Census data with more current and relevant information, which will better describe conditions and progress across the District. This supplement provides a taster of that work.

It is the intention to consult Elected Members on themes and priorities. Regular data updates will then be incorporated into the intranet 'Members Information System' supported by improved analysis and narrative. Periodic snapshots in paper document form will continue to be available.

Job Seekers Allowance

The 1991 to 2006 Job Seekers Allowance data give an insight into the number of claimants under pensionable age who are available for, and actively seeking work of at least 40 hours a week.



Job Seekers Allowance Claimants

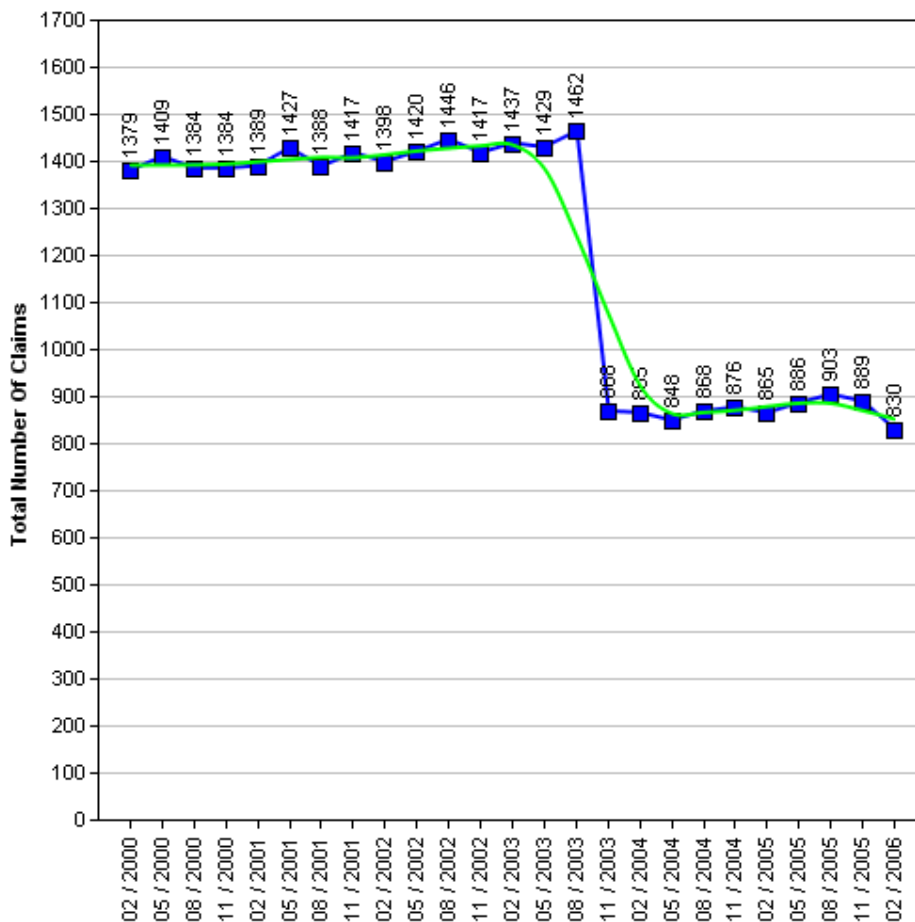
	1999	2000	2001	2002	2003	2004	2005	2006	2007
Quarter 1 (February)	-	521	489	426	469	393	368	403	393
Quarter 2 (May)	-	470	464	433	441	392	358	412	-
Quarter 3 (August)	505	457	468	476	459	333	380	402	-
Quarter 4 (November)	459	443	399	420	406	356	383	405	-



Income Support

The 2000 to 2006 Income Support data give an insight into the number of claimants between the age of 16-59 who have a low income, don't have savings of £16,000 or more, are not working, work on average less than 16 hours a week, or are unable to work because they are:

- A Lone parent
- Registered sick or disabled
- A student and either a lone parent or disabled
- Or caring for someone who is sick or elderly



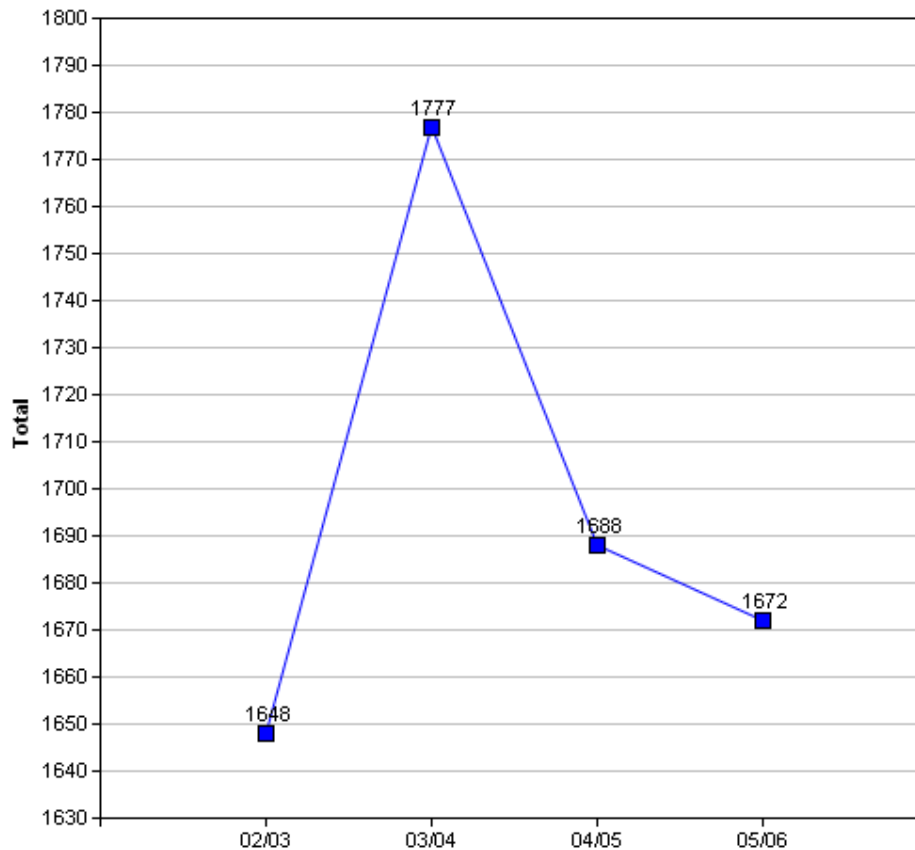
WARNING: In the Income Support table there is a drop in the number of claimants between the months of August 2003 and November 2003. The explanation for this is because "from October 2003, Income Support for pensioners was replaced by 'Pension Credit'" (Source: www.mind.org.uk).

Income Support Claimants

	2000	2001	2002	2003	2004	2005	2006
Quarter 1 (February)		1389	1398	1437	865	865	830
Quarter 2 (May)	1379	1427	1420	1429	848	886	-
Quarter 3 (August)	1409	1388	1446	1462	868	903	-
Quarter 4 (November)	1384	1417	1417	868	876	889	-

Crime

The Crime data is based on the Crime Domain from the Indices of Deprivation 2004. The Crime Domain consists of 33 categories of recorded crime which are then grouped to form 4 composite indicators: burglary, criminal damage, theft and violence. This report gives an insight into the number of offences committed within the selected area and compares this with the Bradford district. The data is displayed for each year by composite indicator.

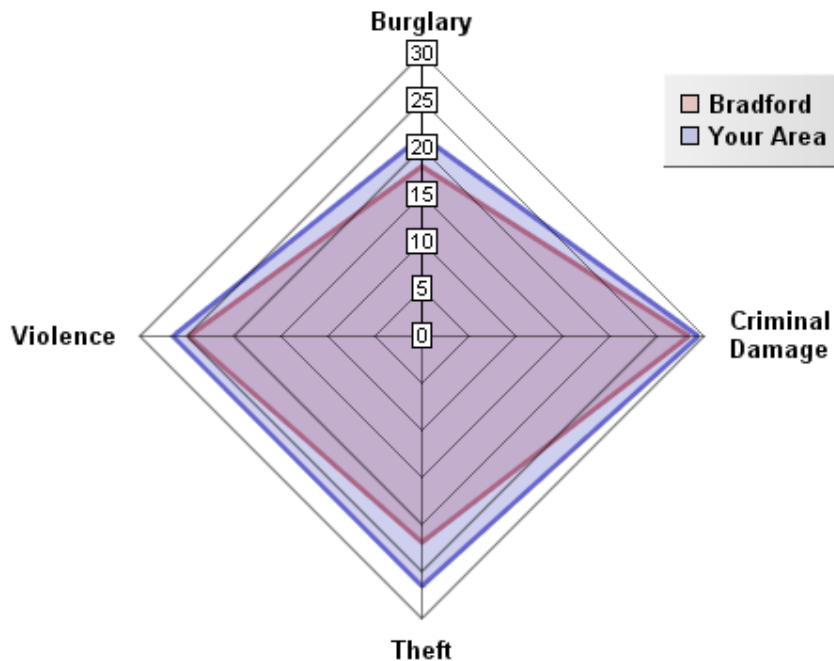


Overall Crimes per Year

Year	Selected Area			Bradford District		
	No.Offences	Change	% Change	No.Offences	Change	% Change
2002/03	1,648			49,264		
2003/04	1,777	+129	+7.8%	48,973	+291	+0.59%
2004/05	1,688	-89	-5.0%	40,747	+8,226	+16.80%
2005/06	1,672	-16	-0.9%	43,562	-2815	-6.91%

There has been a 1.5% increase in crime in Great Horton between 2002 and 2006. This is mainly due to there being exceptionally low levels of crime in 2002 in the ward, which has proven to be unsustainable in the following years. It is important to note that ID2004 Crime Domain definition of crime is limited to a subset of crime. A more accurate picture can be obtained by looking at Overall Crime Levels in the district.

05/06 Comparison with District (Rate per 1000 population)

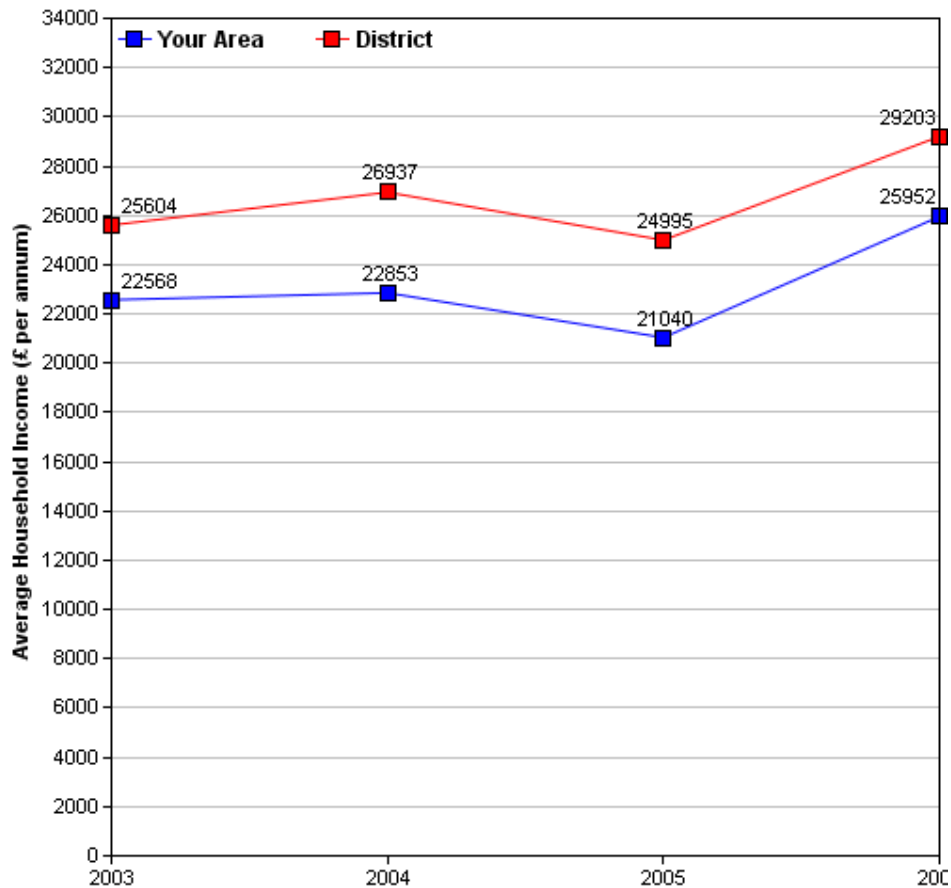


The above crime radar graph compares four variables of crime, per thousand population for your area, with that of the Bradford district. The pink line indicates the Bradford District rate and the blue line represents the rate for your area. The radar graph allows us to see that all crime variables in your area are above the district averages. The radar graph also allows you to see which crime variables are closer or further from the district rate, by comparing the gap between the blue and pink lines. Burglary (20 per thousand population) for your area is below the district rate (17.5 per thousand population). Criminal Damage is closer to the district average, as the gap between the pink and blue lines are shortest for this variable, when compared to the other crime variables for your area. The gaps between the district rate and your area are longer for Theft and Burglary. This indicates that these crime rate variables are more frequent in your area compared to the district rate. The level of crime in your area reflects the general urban characteristic of the area, and the higher levels of unemployment and deprivation.

Income

Information relating to income is derived from data supplied by CACI called 'PayCheck', which provides estimates of mean household income for every postcode in the UK. Unfortunately, it is not possible to use PayCheck data to examine changes in income over time, due to changes in data collection methods. However, it is possible to compare figures from different geographic areas (i.e. Ward and District) for the same time period, as they are derived using the same data collection method.

(For more information on PayCheck data please see www.caci.co.uk.)



Overall Income by Year

	2003	2004	2005	2006
Mean per Annum	£22,568.36	£22,853.03	£21,040.72	£25,952.71
Mean per Annum (District)	£25,604.05	£26,936.70	£24,995.30	£29,203.1

Ethnic Diversity

This data comes from the 1991 and 2001 Censuses and shows the diversity of ethnic groups within the Bradford District. By comparing the 1991 Census with the 2001 Census we are able to compare the area over time. The Great Horton ward appears to have become more diverse.

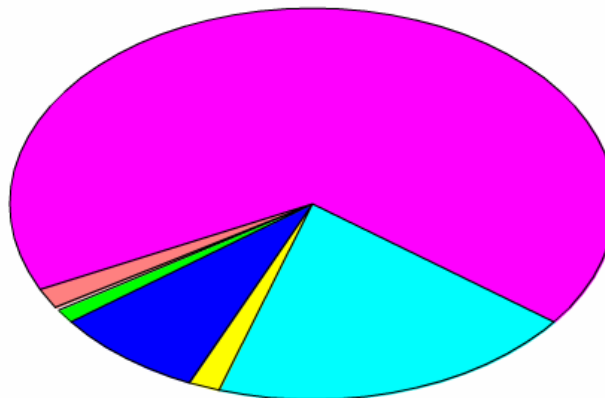
Ethnic Diversity 1991

	Number	Percentage
White	12,016	77.9 %
Asian	2,984	19.3 %
Black	230	1.5 %
Other	200	1.3 %

Ethnic Diversity 2001

	Number	Percentage
White	10,885	67.6 %
Mixed	284	1.8 %
Asian	4,474	27.8 %
Black	191	1.2 %
Other	271	1.7 %

■ Bangladeshi	22(0%)
■ Black or Black British	190(1%)
■ Indian	1,295(8%)
■ Mixed(1)	283(2%)
■ Pakistani	3,154(20%)
■ White	10,885(68%)
■ Other ethnic group	271(2%)



Travel to Work (Census 2001)

This data comes from the 2001 Census. It has details about the people who travel to and from the area to go to work, and their method of getting there.

Travel from Great Horton

Totals

Total People travelling from Area	Distance Travelled (in Km)					
	Average (mean)	Maximum	Standard Deviation	Standard Deviation (of the population)	Variance	Variance (of the population)
6,517	7	312	26	26	676,467	676,409
Method of travel to work						
Works mainly at or from home	Public Transport			Bicycle	On Foot	Other
	Train	Bus etc	Taxi			
467	78	1,077	56	66	783	27
By Car				Motorcycle etc		
As driver		As passenger				
3,293		622		40		

By Local Authority

Destination Local Authority	Total People travelling from Area	Distance Travelled (in Km)	
		Average (mean)	Maximum
Bradford	5,441	3	19
Leeds	550	14	34
Calderdale	154	8	24
Kirklees	148	12	17
Wakefield	34	22	38
Craven	20	24	26
Manchester	12	43	46
Doncaster	9	48	50
York	9	51	52
Stockport	8	50	54
Barnsley	7	33	38
Hillingdon	6	266	271
Edinburgh, City of	6	N/A	N/A
Liverpool	6	85	86
Bolton	6	47	47

Travel to Great Horton

Totals

Total People travelling to Area	Distance Travelled (in Km)					
	Average (mean)	Maximum	Standard Deviation	Standard Deviation (of the population)	Variance	Variance (of the population)
6,899	7	395	25	25	625,490	625,447
Method of travel to work						
Works mainly at or from home	Public Transport			Bicycle	On Foot	Other
	Train	Bus etc	Taxi			
467	22	796	40	35	827	27
By Car				Motorcycle etc		
As driver		As passenger				
3,983		660		42		

By Local Authority

Origin Local Authority	Total People travelling from Area	Distance Travelled (in Km)	
		Average (mean)	Maximum
Bradford	5,752	3	20
Leeds	343	13	24
Calderdale	291	8	18
Kirklees	241	13	26
Wakefield	47	25	35
Craven	29	25	38
Harrogate	24	29	33
Barnsley	12	34	40
York	12	50	54
Manchester	9	47	48
Rosendale	9	30	33
Warrington	8	64	66
Solihull	6	149	152
Flintshire	6	108	110
Rochdale	6	28	30

Of the people who travel to work from Great Horton, over 60.1% travel by car (50.5% as drivers and 9.5% as passengers), 6.1% by motorcycle and 0.3% travel by other means (including Train, buses, taxi's, bicycle, on foot and other modes). The remaining 7.2% work predominantly from home.

Over 6% more people travel to Great Horton than those that travel from Great Horton.

Of the people who travel to work in Great Horton, over 67.3% travel by car (57.7% as drivers and 9.6% as passengers), 0.6% by motorcycle and 25.3% travel by other means (including Train, buses, taxi's, bicycle, on foot and other modes). The remaining 6.8% work predominantly from home.

Indices of Deprivation 2004 (ID2004)

The Index of Multiple Deprivation 2004 (IMD 2004) is a Super Output Area (SOA) level measure of multiple deprivation. England is divided into 32,482 SOAs, which are small areas containing an average of 1,500 residents. The IMD 2004 project gives a score and rank to each SOA for seven areas of deprivation:

- Income deprivation
- Employment deprivation
- Health deprivation and disability
- Education, skills and training deprivation
- Barriers to Housing and Services
- Living environment deprivation
- Crime

Also, each SOA has been given an overall score and rank which takes into account all seven indices, and this is known as the Index of Multiple Deprivation 2004.

Ranks vary from 1 to 32,482, with 1 being the most deprived. Higher scores indicate that areas are more deprived. When comparing the deprivation of different areas, it is better to look at the rank than the score. Bradford Council has been able to use the Maps and Stats web-based GIS system (www.mapsandstats.com) to combine scores for the SOAs that fall within the wards, and hence estimate the Indices of Deprivation at ward level.

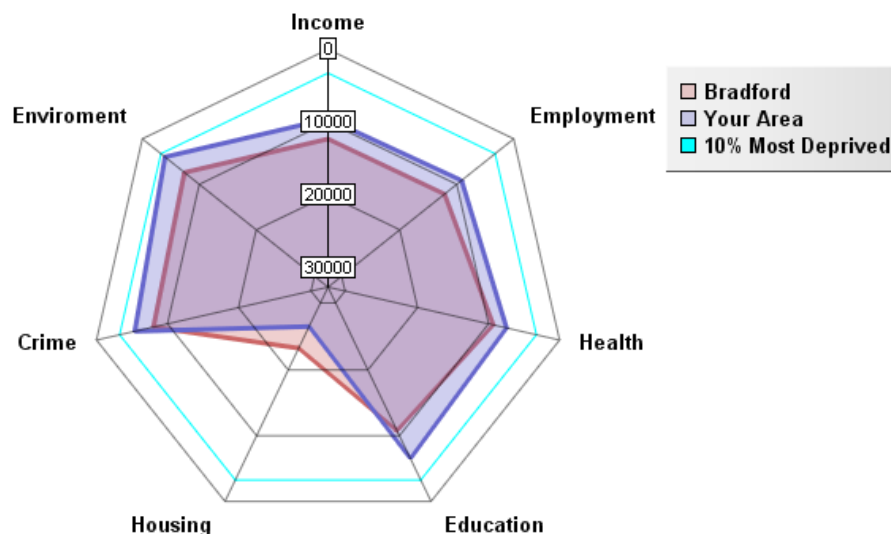
Index of Multiple Deprivation 2004

	ID 2004 Overall Rank (Average)	ID 2004 Overall Score
E01004943 in Bury LA	7480	31.57
Great Horton Ward	7480.40	35.96
E01016511 in Slough LA	7481	31.56
Average for Bradford	10656.03	32.93

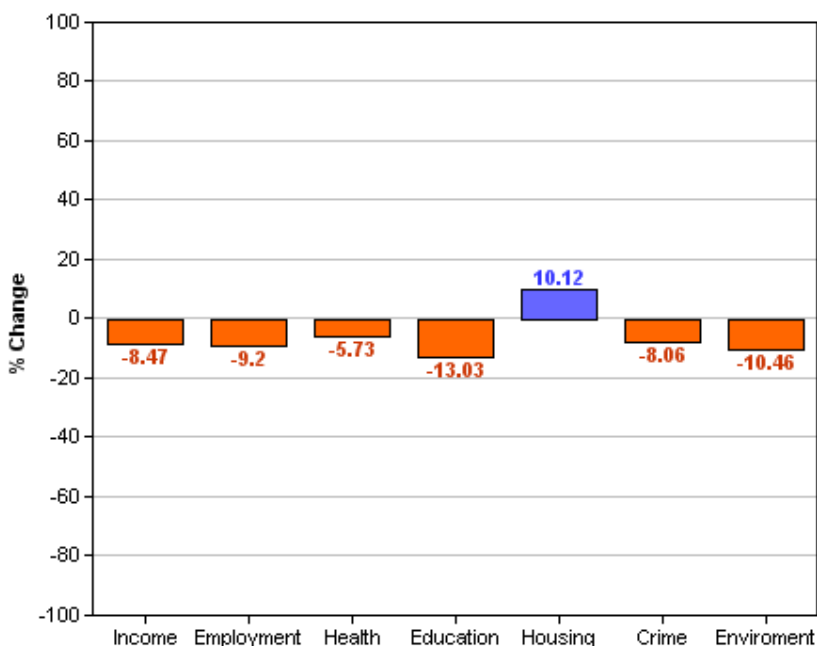
This table shows the average ranks and scores for the Great Horton ward. The rows above and below Great Horton show which SOAs in England have the most similar ranks to this ward, and are therefore considered to have the most similar levels of deprivation. It is important to note, however, that these areas may be deprived for different reasons.

Area Rank against Average Bradford

The following radar graph and bar chart indicate that the Great Horton ward is more deprived compared to the rest of the District, except for Housing. Only the Housing domain (10.1) of the Index of Deprivation 2004 is Great Horton experiencing significantly less levels of deprivation than the Bradford District average. Overall, the Great Horton ward is more deprived than the district average on all domains, except Housing. Great Horton is most deprived in Education (-13.0) and Environment (-10.4).



Percentage Difference between Area Rank and Average Bradford Rank



Other dataset currently being investigated / acquired:

Health

Low birth weight
 Death Rates
 Smoking attributable health admissions
 Perception Surveys (Speak-out)

Education

%5 A – C GCSE’s (Inc. Maths and English)
 Key Stage Results
 Adult qualifications
 Truancy

Economy

Benefit measures & Incapacity benefit
 Income levels (Household)
 NEET’s
 Business start-up survival rates

Crime

Criminal damage
 Burglary
 ASB (Needs clarifying)
 Youth offending
 Road traffic accidents (RTA)


Liveability

House prices
 Void properties
 Cleanliness
 Open spaces
 Housing condition

Stronger Communities

Voting rates

Plus many other council datasets as they become available through the GIS strategy.

	<p>All 30 Ward profiles and supplements can be found at: http://www.bradfordinfo.com/census/WardProfiles.cfm</p> <p>This bulletin was produced by the Research and Consultation Service, City of Bradford Metropolitan District Council. Email: stephen.elves@bradford.gov.uk Tel: 01274 43 7269 August 2007</p>
---	--