

Keighley Central Ward Profile Supplement

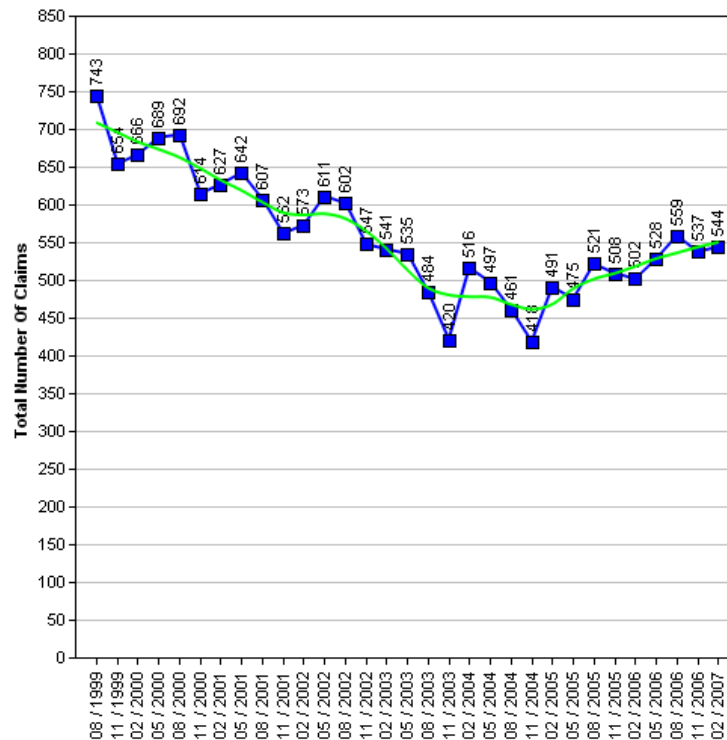
The Census is a survey of all people and households in the country that takes place every 10 years. The Census was last carried out in 2001, with results published in 2003. The next Census is due in 2010, with results expected in 2013. Consequently the actual data cannot be updated in intervening years.

Work has been underway for some time to produce a range of alternative datasets for Bradford to supplement the 2001 Census data with more current and relevant information, which will better describe conditions and progress across the District. This supplement provides a taster of that work.

It is the intention to consult Elected Members on themes and priorities. Regular data updates will then be incorporated into the intranet 'Members Information System' supported by improved analysis and narrative. Periodic snapshots in paper document form will continue to be available.

Job Seekers Allowance

The 1991 to 2006 Job Seekers Allowance data give an insight into the number of claimants under pensionable age who are available for, and actively seeking work of at least 40 hours a week.



Job Seekers Allowance Claimants

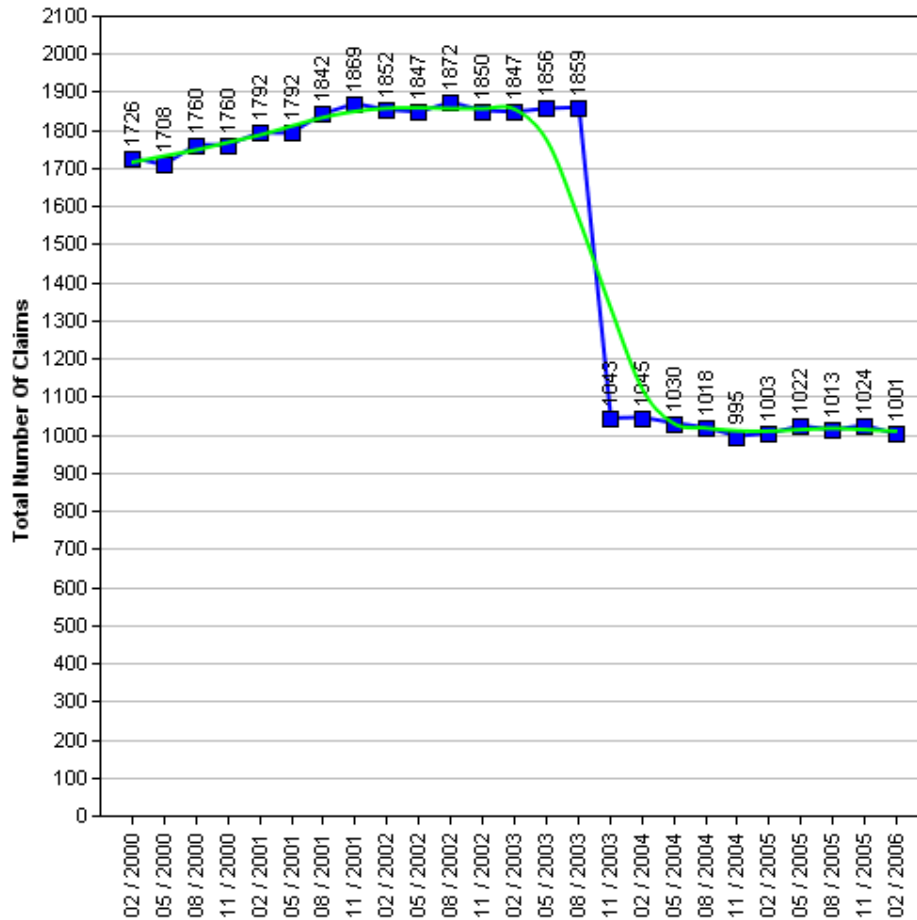
	1999	2000	2001	2002	2003	2004	2005	2006	2007
Quarter 1 (February)	-	666	627	573	541	516	491	502	544
Quarter 2 (May)	-	689	642	611	535	497	475	528	-
Quarter 3 (August)	743	692	607	602	484	461	521	559	-
Quarter 4 (November)	654	614	562	547	420	418	508	537	-



Income Support

The 2000 to 2006 Income Support data give an insight into the number of claimants between the age of 16-59 who have a low income, don't have savings of £16,000 or more, are not working, work on average less than 16 hours a week, or are unable to work because they are:

- A Lone parent
- Registered sick or disabled
- A student and either a lone parent or disabled
- Or caring for someone who is sick or elderly



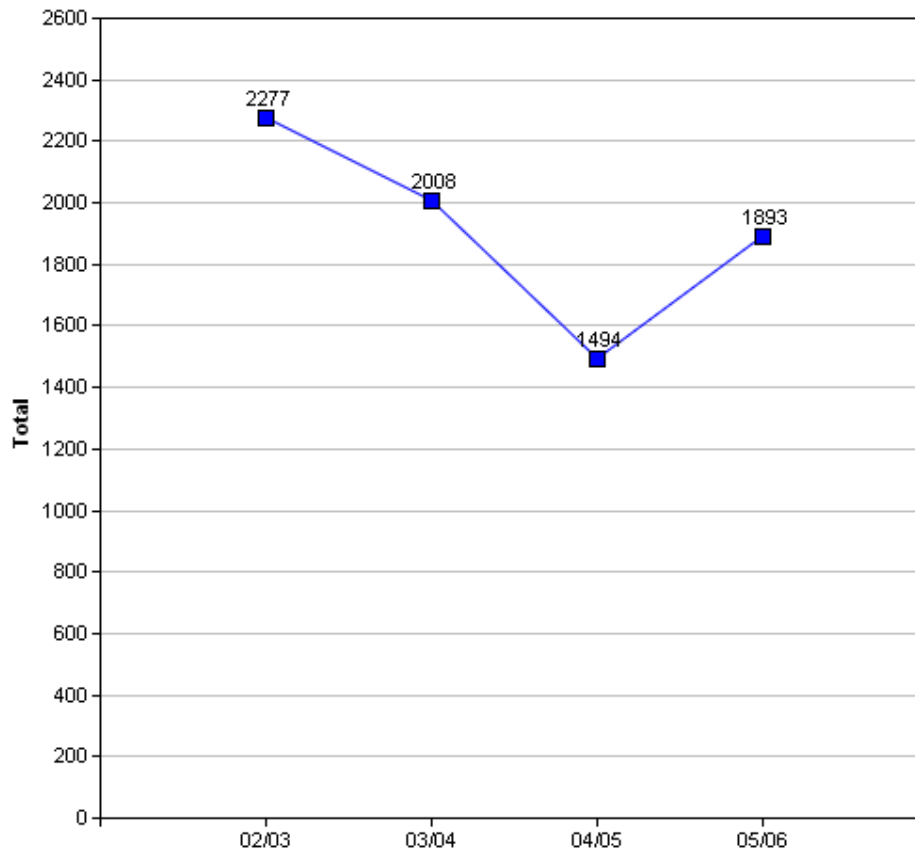
WARNING: In the Income Support table there is a drop in the number of claimants between the months of August 2003 and November 2003. The explanation for this is because "from October 2003, Income Support for pensioners was replaced by 'Pension Credit'" (Source: www.mind.org.uk).

Income Support Claimants

	2000	2001	2002	2003	2004	2005	2006
Quarter 1 (February)	-	1,792	1,852	1,847	1,045	1,003	1,001
Quarter 2 (May)	1,726	1,792	1,847	1,856	1,030	1,022	-
Quarter 3 (August)	1,708	1,842	1,872	1,859	1,018	1,013	-
Quarter 4 (November)	1,760	1,869	1,850	1,043	995	1,024	-

Crime

The Crime data is based on the Crime Domain from the Indices of Deprivation 2004. The Crime Domain consists of 33 categories of recorded crime which are then grouped to form 4 composite indicators: burglary, criminal damage, theft and violence. This report gives an insight into the number of offences committed within the selected area and compares this with the Bradford district. The data is displayed for each year by composite indicator.

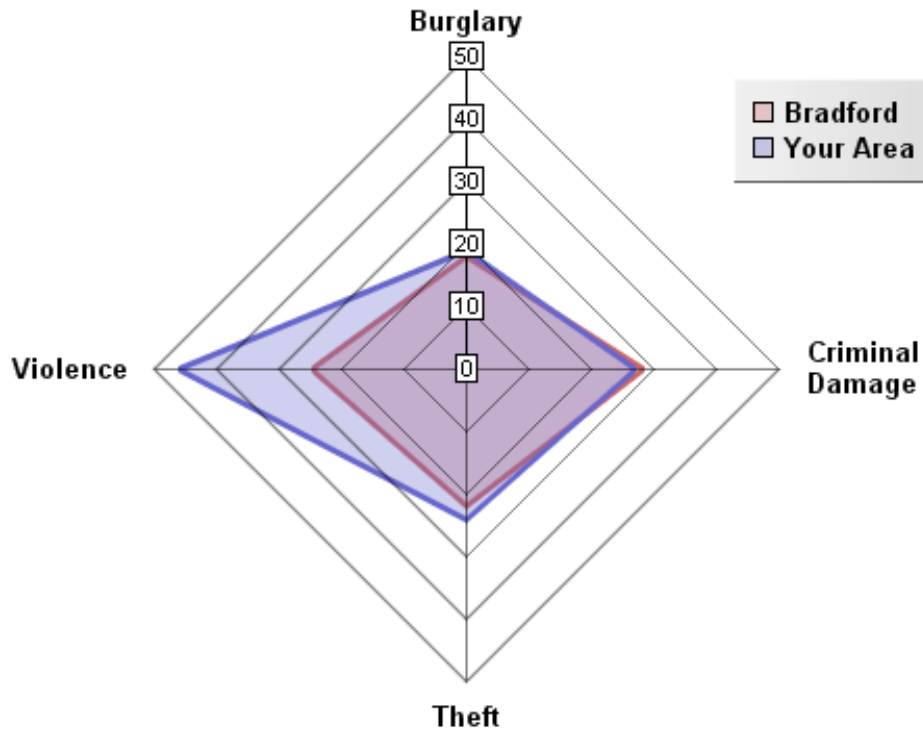


Overall Crimes per Year

Year	Selected Area			Bradford District		
	No.Offences	Change	% Change	No.Offences	Change	% Change
2002/03	2,277			49,264		
2003/04	2,008	-269	-11.8%	48,973	+291	+0.6%
2004/05	1,494	-514	-25.6%	40,747	+8,226	+16.8%
2005/06	1,893	+399	+26.7%	43,562	-2815	-6.9%

The pattern of crime in the Keighley Central Ward has broadly followed a similar trend to the district. In 2004/05 numerous district wide initiatives from West Yorkshire Police and the District Crime and Disorder Reduction Partnership yielded significant reductions in crime across most categories. This was an exceptional year for crime reduction and such significant reductions have proven to be unsustainable in the following years. However there has still been a 16.9% decrease in crime between 2002 and 2006. It is important to note that ID2004 Crime Domain definition of crime is limited to a subset of crime. A more accurate picture can be obtained by looking at Overall Crime Levels in the district.

05/06 Comparison with District (Rate per 1000 population)

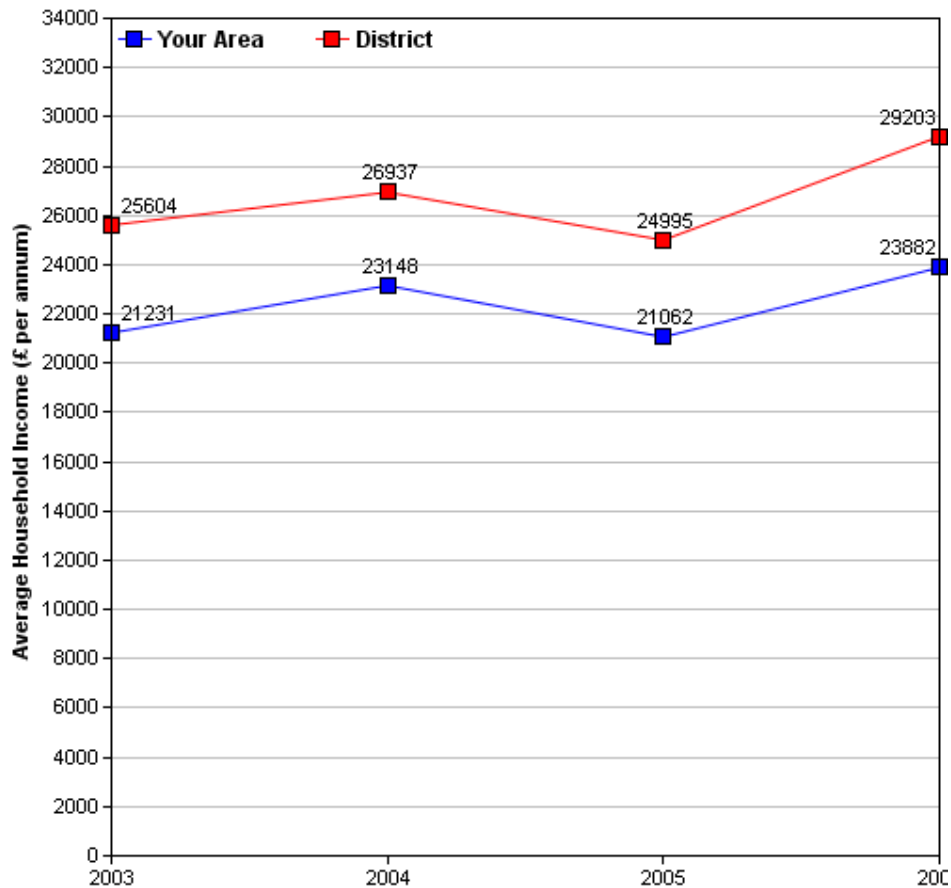


The above crime radar graph compares four variables of crime, per thousand population for your area, with that of the Bradford district. The pink line indicates the Bradford District rate and the blue line represents the rate for your area. The radar graph allows us to see that three crime variables in your area are similar to those of the district, with the exception of Violence, as the rate per thousand population significantly exceeds that of the District for this variable. The radar graph also allows you to see which crime variables are closer or further from the district rate, by comparing the gap between the blue and pink lines. Violence (46 per thousand population) for your area is higher than the district rate (22 per thousand population). Burglary is closer to the district average, as the gap between the pink and blue lines are shortest for this variable, when compared to the other crime variables for your area. The gaps between the district rate and your area are longer for Violence. The high rate of violent crime for Keighley Central may well reflect the town centre characteristics of late night entertainment and high concentration of premises selling alcohol.

Income

Information relating to income is derived from data supplied by CACI called 'PayCheck', which provides estimates of mean household income for every postcode in the UK. Unfortunately, it is not possible to use PayCheck data to examine changes in income over time, due to changes in data collection methods. However, it is possible to compare figures from different geographic areas (i.e. Ward and District) for the same time period, as they are derived using the same data collection method.

(For more information on PayCheck data please see www.caci.co.uk.)



Overall Income by Year

	2003	2004	2005	2006
Mean per Annum	£21,230.84	£23,148.47	£21,062.35	£23,882.42
Mean per Annum (District)	£25,604.05	£26,936.70	£24,995.30	£29,203.12

Ethnic Diversity

This data comes from the 1991 and 2001 Censuses and shows the diversity of ethnic groups within the Bradford District. By comparing the 1991 Census with the 2001 Census we are able to compare the area over time. The Keighley Central ward appears to have become more diverse.

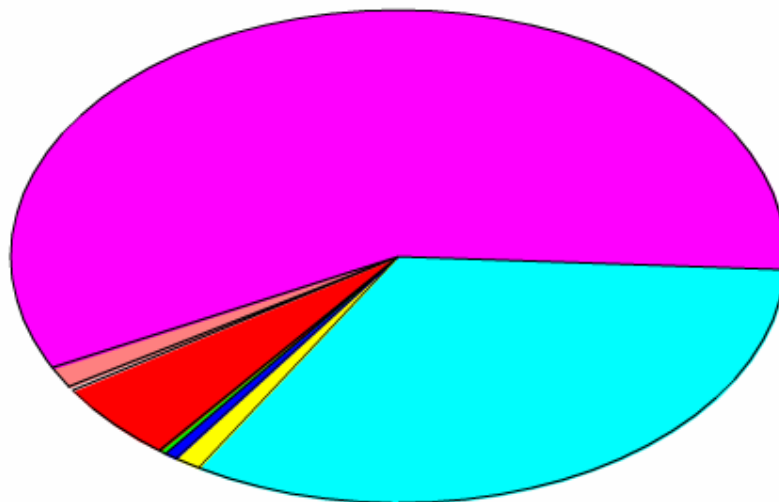
Ethnic Diversity 1991

	Number	%
White	10,952	68.1 %
Asian	4,900	30.5 %
Black	73	0.5 %
Other	154	1.0 %

Ethnic Diversity 2001

	Number	Percentage
White	9,534	58.4 %
Mixed	179	1.1 %
Asian	6,334	38.8 %
Black	55	0.3 %
Other	210	1.3 %

■ Bangladeshi	874(5%)
■ Black or Black British	54(0%)
■ Indian	111(1%)
■ Mixed(1)	179(1%)
■ Pakistani	5,347(33%)
■ White	9,533(58%)
■ Other ethnic group	209(1%)



Travel to Work (Census 2001)

This data comes from the 2001 Census. It has details about the people who travel to and from the area to go to work and their method of getting there.

Travel from Keighley Central

Totals

Total People travelling from Area	Distance Travelled (in Km)					
	Average (mean)	Maximum	Standard Deviation	Standard Deviation (of the population)	Variance	Variance (of the population)
5,545	10	359	27	27	727,463	727,412
Method of travel to work						
Works mainly at or from home	Public Transport			Bicycle	On Foot	Other
	Train	Bus etc	Taxi			
435	292	564	35	37	905	28
By Car				Motorcycle etc		
As driver		As passenger				
2,685		526		30		

By Local Authority

Destination Local Authority	Total People travelling from Area	Distance Travelled (in Km)	
		Average (mean)	Maximum
Bradford	4,573	4	19
Leeds	341	23	34
Craven	261	10	24
Kirklees	71	26	29
Calderdale	46	18	24
Pendle	28	17	22
Sheffield	21	61	62
Burnley	18	22	23
Harrogate	18	24	35
Wakefield	15	35	39
Barnsley	9	47	52
Darlington	9	76	76
Warrington	6	67	70
Newcastle upon Tyne	6	123	123
North Somerset	6	284	289

Travel to Keighley Central

Totals

Total People travelling to Area	Distance Travelled (in Km)					
	Average (mean)	Maximum	Standard Deviation	Standard Deviation (of the population)	Variance	Variance (of the population)
10,027	6	412	18	18	307,252	307,244
Method of travel to work						
Works mainly at or from home	Public Transport			Bicycle	On Foot	Other
	Train	Bus etc	Taxi			
435	139	1,352	83	67	1,377	33
By Car				Motorcycle etc		
As driver		As passenger				
5,593		852		91		

By Local Authority

Origin Local Authority	Total People travelling from Area	Distance Travelled (in Km)	
		Average (mean)	Maximum
Bradford	8,456	4	19
Craven	776	11	50
Leeds	240	20	38
Calderdale	176	17	23
Kirklees	81	25	35
Pendle	68	18	25
Harrogate	38	27	45
Wakefield	34	36	46
Doncaster	18	63	68
Burnley	17	26	29
Hyndburn	12	34	36
York	9	54	56
Salford	9	50	51
Rochdale	9	36	40
Oldham	6	36	36

Of the people who travel to work from Keighley Central, over 57.9% travel by car (48.4% as drivers and 9.5% as passengers), 5.4% by motorcycle and 0.4% travel by other means (including train, buses, taxis, bicycle, on foot and other modes). The remaining 7.8% work predominantly from home.

Over 45% more people travel to Keighley Central than those that travel from Keighley Central.

Of the people who travel to work in Keighley Central, over 64.3% travel by car (55.8% as drivers and 8.5% as passengers), 0.9% by motorcycle and 30.4% travel by other means (including train, buses, taxis, bicycle, on foot and other modes). The remaining 4.3% work predominantly from home.

Indices of Deprivation 2004 (ID2004)

The Index of Multiple Deprivation 2004 (IMD 2004) is a Super Output Area (SOA) level measure of multiple deprivation. England is divided into 32,482 SOAs, which are small areas containing an average of 1,500 residents. The IMD 2004 project gives a score and rank to each SOA for seven areas of deprivation:

- Income deprivation
- Employment deprivation
- Health deprivation and disability
- Education, skills and training deprivation
- Barriers to Housing and Services
- Living environment deprivation
- Crime

Also, each SOA has been given an overall score and rank which takes into account all seven indices, and this is known as the Index of Multiple Deprivation 2004.

Ranks vary from 1 to 32,482, with 1 being the most deprived. Higher scores indicate that areas are more deprived. When comparing the deprivation of different areas, it is better to look at the rank than the score. Bradford Council has been able to use the Maps and Stats web-based GIS system (www.mapsandstats.com) to combine scores for the SOAs that fall within the wards, and hence estimate the Indices of Deprivation at ward level.

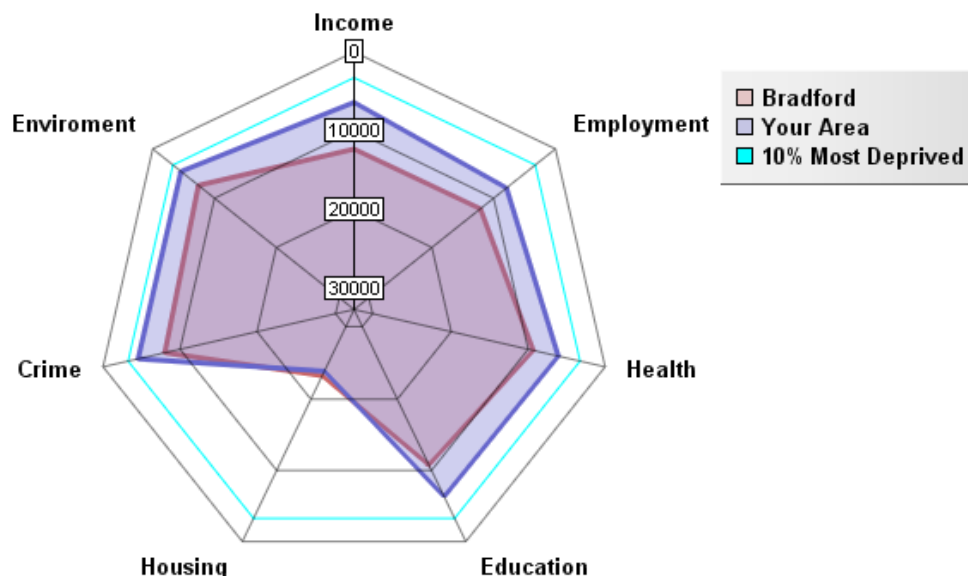
Index of Multiple Deprivation 2004

	ID 2004 Overall Rank (Average)	ID 2004 Overall Score
E01024856 in Burnley LA	5731	36.45
Keighley Central Ward	5731.33	42.51
E01018539 in Ellesmere Port & Neston LA	5732	36.43
Average for Bradford	10656.03	32.93

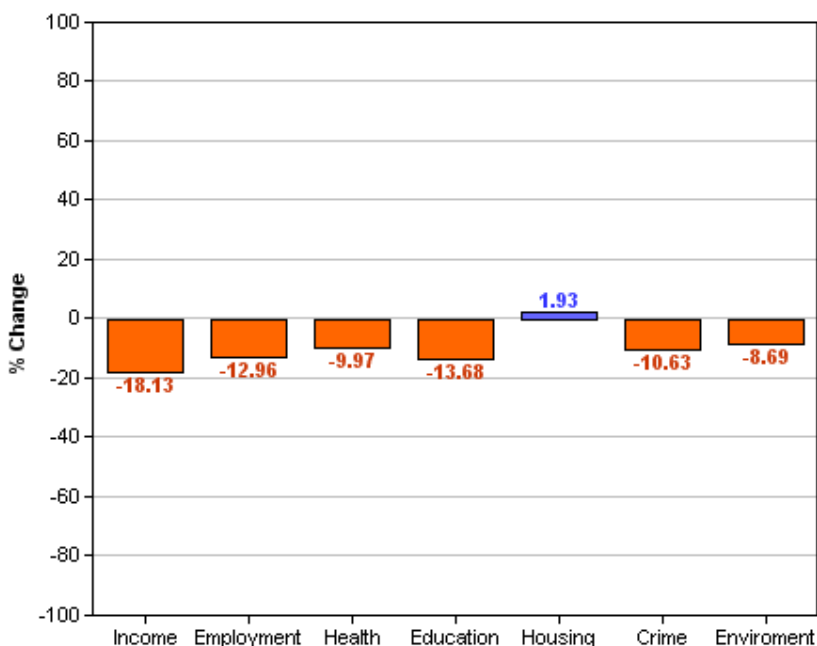
This table shows the average ranks and scores for the Keighley Central ward. The rows above and below Keighley Central show which SOAs in England have the most similar ranks to this ward, and are therefore considered to have the most similar levels of deprivation. It is important to note, however, that these areas may be deprived for different reasons.

Area Rank against Average Bradford Rank

The radar graph below indicates that Keighley Central is more deprived compared to the rest of the District average, only in the Housing domain of the index is Keighley Central ranked at a similar level to that of the Bradford district. This is likely to be due to the low level of deprivation within the Bradford district for this index domain. Overall Keighley Central is reasonably deprived in terms of Income, Employment, Health, Education and crime. Keighley Central comes closest to being ranked in the 10% most deprived areas for Crime and Environment domains of the index. The gap between the Bradford district average and your area is greatest for income (-18.1) and Education (-13.6).



Percentage Difference between Area Rank and Average Bradford Rank



Other datasets currently being investigated / acquired:

Health

Low birth weight
 Death Rates
 Smoking attributable health admissions
 Perception Surveys (Speak-out)

Education

%5 A – C GCSE's (Inc. Maths and English)
 Key Stage Results
 Adult qualifications
 Truancy

Economy

Benefit measures & Incapacity benefit
 Income levels (Household)
 NEET's
 Business start-up survival rates

Crime

Criminal damage
 Burglary
 ASB (Needs clarifying)
 Youth offending
 Road traffic accidents (RTA)


Liveability

House prices
 Void properties
 Cleanliness
 Open spaces
 Housing condition

Stronger Communities

Voting rates

Plus many other council datasets as they become available through the GIS strategy.

	<p>All 30 Ward profiles and supplements can be found at: http://www.bradfordinfo.com/census/WardProfiles.cfm</p> <p>This bulletin was produced by the Research and Consultation Service, City of Bradford Metropolitan District Council. Email: stephen.elves@bradford.gov.uk Tel: 01274 43 7269 August 2007</p>
---	--