

## Keighley West Ward Profile Supplement

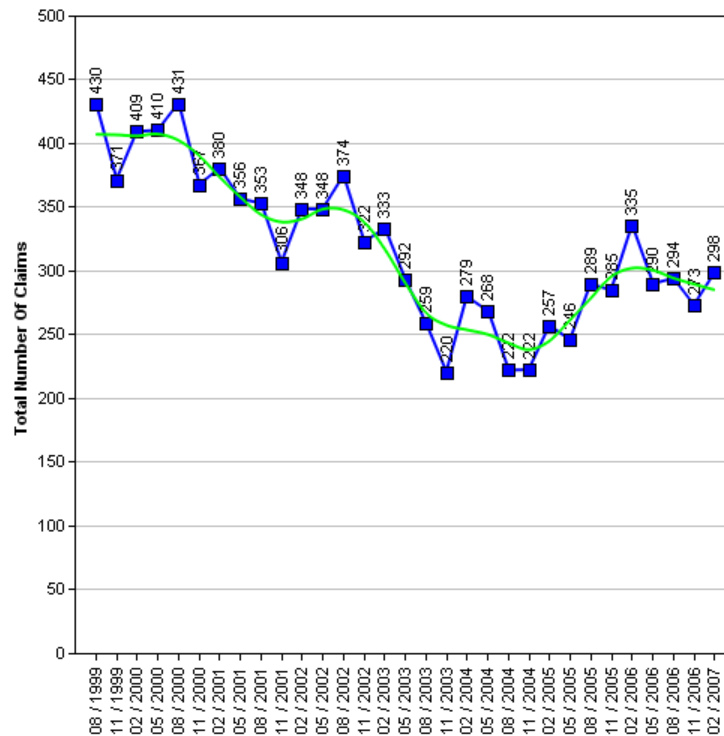
The Census is a survey of all people and households in the country that takes place every 10 years. The Census was last carried out in 2001, with results published in 2003. The next Census is due in 2010, with results expected in 2013. Consequently the actual data cannot be updated in intervening years.

Work has been underway for some time to produce a range of alternative datasets for Bradford to supplement the 2001 Census data with more current and relevant information, which will better describe conditions and progress across the District. This supplement provides a taster of that work.

It is the intention to consult Elected Members on themes and priorities. Regular data updates will then be incorporated into the intranet 'Members Information System' supported by improved analysis and narrative. Periodic snapshots in paper document form will continue to be available.

### Job Seekers Allowance

The 1991 to 2006 Job Seekers Allowance data give an insight into the number of claimants under pensionable age who are available for and actively seeking work of at least 40 hours a week.



### Job Seekers Allowance Claimants

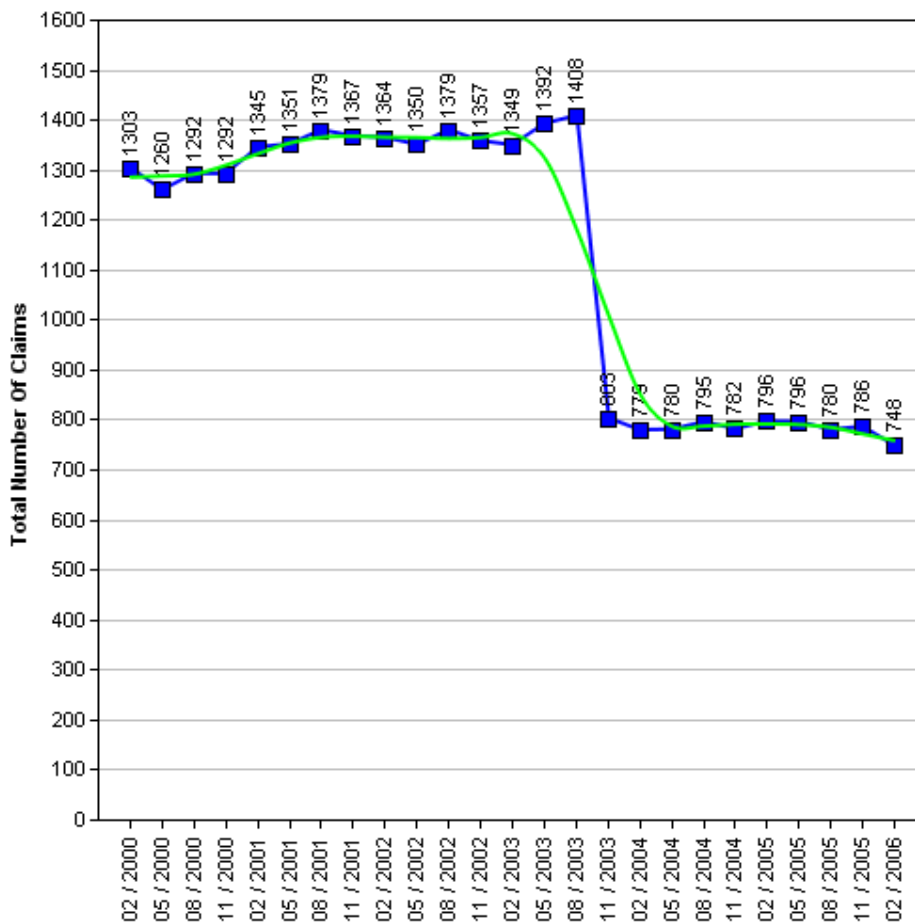
	1999	2000	2001	2002	2003	2004	2005	2006	2007
Quarter 1 (February)	-	409	380	348	333	279	257	335	298
Quarter 2 (May)	-	410	356	348	292	268	246	290	-
Quarter 3 (August)	430	431	353	374	259	222	289	294	-
Quarter 4 (November)	371	367	306	322	220	222	285	273	-



## Income Support

The 2000 to 2006 Income Support data give an insight into the number of claimants between the age of 16-59 who have a low income, don't have savings of £16,000 or more, are not working, work on average less than 16 hours a week, or are unable to work because they are:

- A Lone parent
- Registered sick or disabled
- A student and either a lone parent or disabled
- Or caring for someone who is sick or elderly



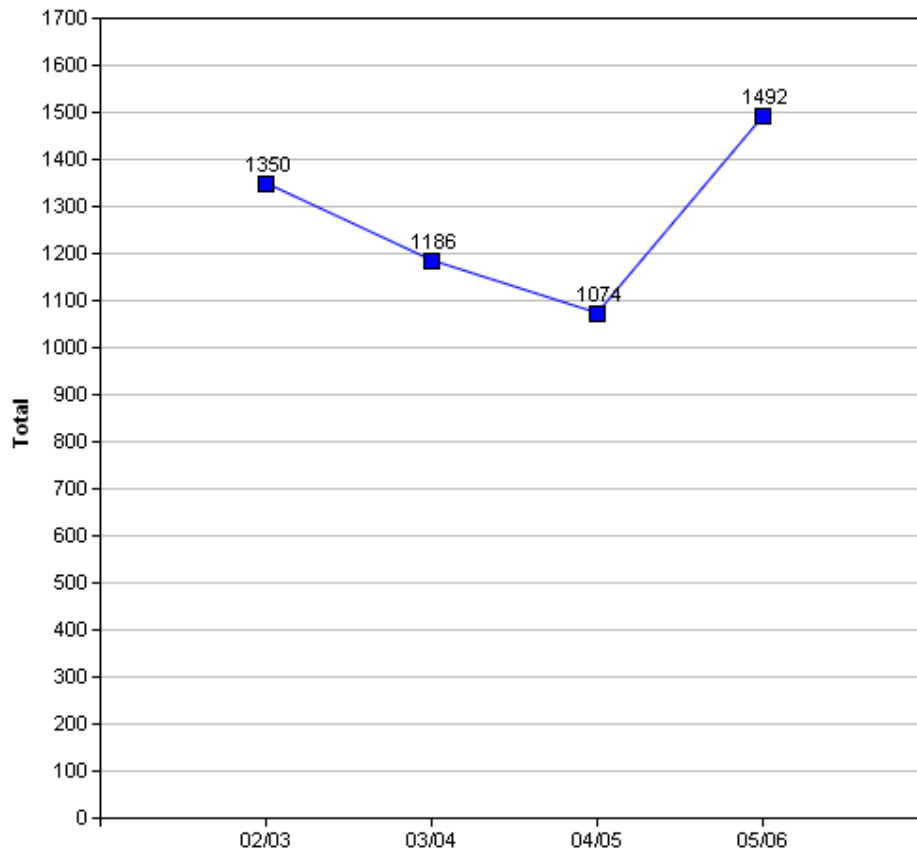
**WARNING:** In the Income Support table there is a drop in the number of claimants between the months of August 2003 and November 2003. The explanation for this is because "from October 2003, Income Support for pensioners was replaced by 'Pension Credit'" (Source: [www.mind.org.uk](http://www.mind.org.uk)).

### Income Support Claimants

	2000	2001	2002	2003	2004	2005	2006
Quarter 1 (February)	1,303	1,345	1,364	1,349	779	796	748
Quarter 2 (May)	1,260	1,351	1,350	1,392	780	796	-
Quarter 3 (August)	1,292	1,379	1,379	1,408	795	780	-

## Crime

The Crime data is based on the Crime Domain from the Indices of Deprivation 2004. The Crime Domain consists of 33 categories of recorded crime which are then grouped to form 4 composite indicators: burglary, criminal damage, theft and violence. This report gives an insight into the number of offences committed within the selected area and compares this with the Bradford district. The data is displayed for each year by composite indicator.

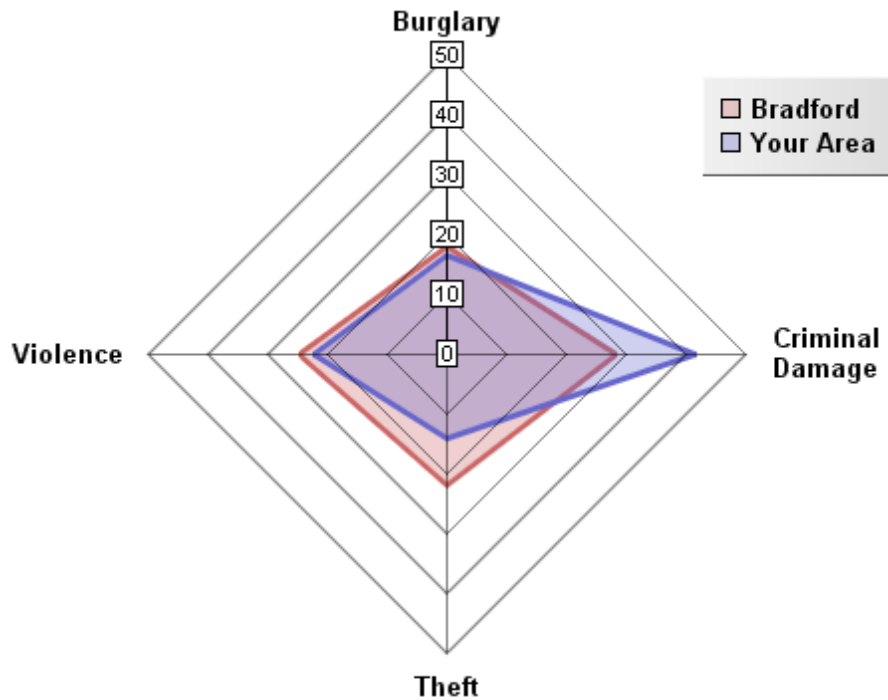


### Overall Crimes per Year

Year	Selected Area			Bradford District		
	No.Offences	Change	% Change	No.Offences	Change	% Change
2002/03	1,350			49,264		
2003/04	1,186	-164	-12.1%	48,973	-291	-0.6%
2004/05	1,074	-112	-9.5%	40,747	-8,226	-16.8%
2005/06	1,492	+418	+38.9%	43,562	+2,815	+6.9%

The pattern of crime in the Keighley West Ward has broadly followed a similar trend to the district. In 2004/05 numerous district wide initiatives from West Yorkshire Police and the District Crime and Disorder Reduction Partnership yielded significant reductions in crime across most categories. This was an exceptional year for crime reduction and such significant reductions have proven to be unsustainable in the following years. There has been a -10.5% increase in crime between 2002 and 2006. It is important to note that ID2004 Crime Domain definition of crime is limited to a subset of crime. A more accurate picture can be obtained by looking at Overall Crime Levels in the district.

### 05/06 Comparison with District (Rate per 1000 population)

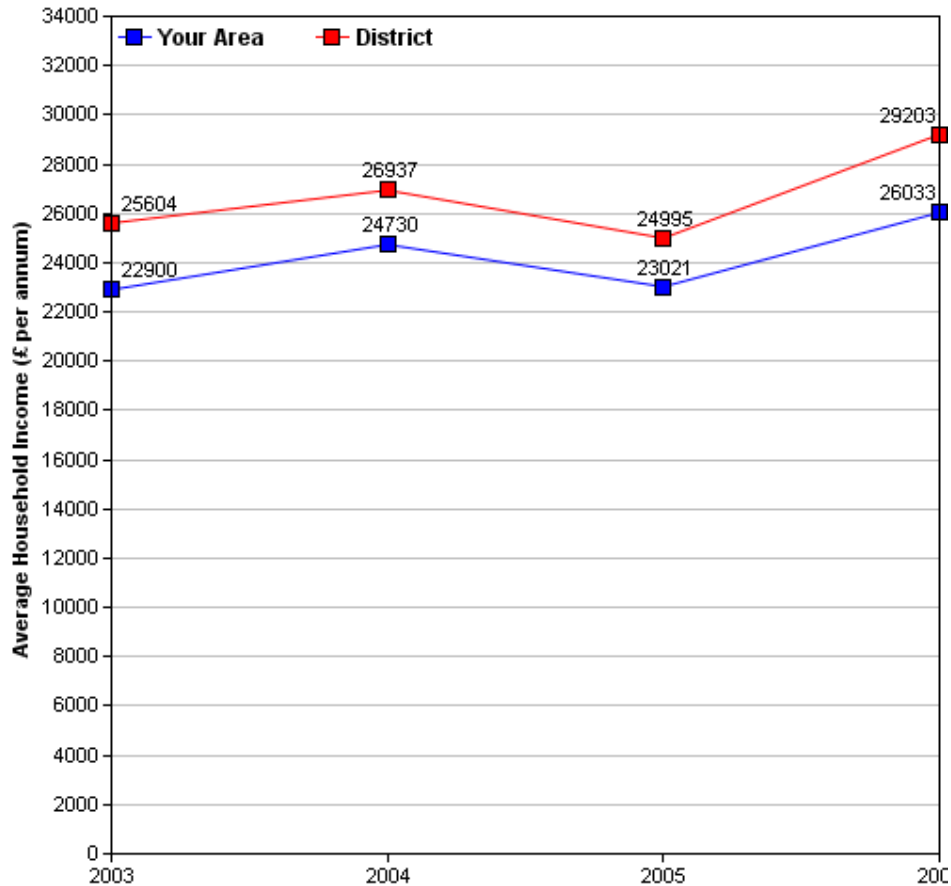


The above crime radar graph compares four variables of crime, per thousand population for your area, with that of the Bradford district. The pink line indicates the Bradford District rate per thousand population and the blue line represents the per thousand population rate for your area. The radar graph indicates that three crime variables in your area, Theft, Violence and Burglary are below those of the district average, whilst Theft is significantly below that of the district. The radar graph also allows you to see which crime variables are closer or further from the district rate, by comparing the gap between the blue and pink lines. Theft (15 per thousand population) for your area is well below the district rate (21 per thousand population). Burglary and Violence are closer to the district average, as the gap between the pink and blue lines are shortest for these two variables, when compared to the other crime variables for your area. The gaps between the district rate and your area are longest for Criminal Damage which significantly exceeds the district average.

## Income

Information relating to income is derived from data supplied by CACI called 'PayCheck', which provides estimates of mean household income for every postcode in the UK. Unfortunately, it is not possible to use PayCheck data to examine changes in income over time, due to changes in data collection methods. However, it is possible to compare figures from different geographic areas (i.e. Ward and District) for the same time period, as they are derived using the same data collection method.

(For more information on PayCheck data please see [www.caci.co.uk](http://www.caci.co.uk).)



### Overall Income by Year

	2003	2004	2005	2006
Mean per Annum	£22,900.75	£24,730.90	£23,021.43	£26,033.92
Mean per Annum (District)	£25,604.05	£26,936.70	£24,995.30	£29,203.12

## Ethnic Diversity

This data comes from the 1991 and 2001 Censuses and shows the diversity of ethnic groups within the Bradford District. By comparing the 1991 Census with the 2001 census we are able to compare the area over time. At both the 1991 (98.7%) and 2001 (96.3%) Census Keighley West was almost completely White.

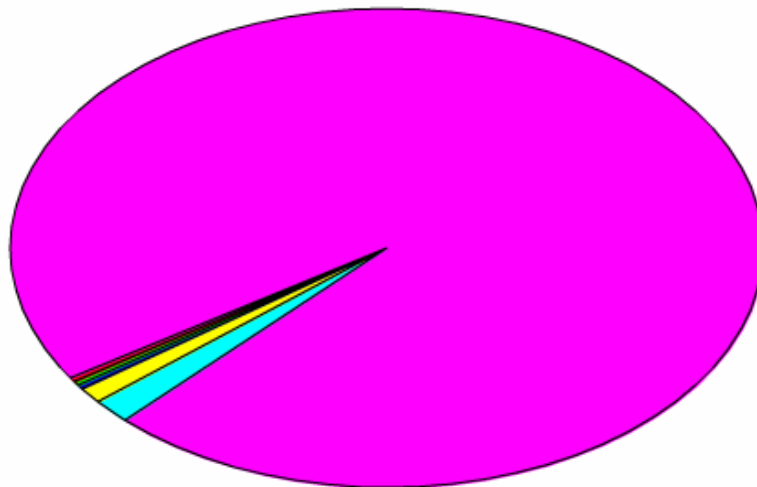
### Ethnic Diversity 1991

	Number	Percentage
White	15,779	98.7%
Asian	127	0.8%
Black	44	0.3%
Other	40	0.3%

### Ethnic Diversity 2001

	Number	Percentage
White	15,232	96.3%
Mixed	170	1.1%
Asian	332	2.1%
Black	46	0.3%
Other	43	0.3%

■ Bangladeshi	24(0%)
■ Black or Black British	46(0%)
■ Indian	54(0%)
■ Mixed(1)	170(1%)
■ Pakistani	252(2%)
■ White	15,231(96%)
■ Other ethnic group	43(0%)



## Travel to Work (Census 2001)

This data comes from the 2001 Census. It has details about the people who travel to and from the area to go to work and their method of getting there.

### Travel from Keighley West

#### Totals

Total People travelling from Area	Distance Travelled (in Km)					
	Average (mean)	Maximum	Standard Deviation	Standard Deviation (of the population)	Variance	Variance (of the population)
6,851	8	405	28	28	763,324	763,262
<b>Method of travel to work</b>						
Works mainly at or from home	Public Transport			Bicycle	On Foot	Other
	Train	Bus etc	Taxi			
462	284	867	61	50	924	12
<b>By Car</b>				<b>Motorcycle etc</b>		
<b>As driver</b>		<b>As passenger</b>				
3,491		656		45		

#### By Local Authority

Destination Local Authority	Total People travelling from Area	Distance Travelled (in Km)	
		Average (mean)	Maximum
Bradford	5897	4	19
Craven	345	11	32
Leeds	310	24	34
Calderdale	67	15	22
Kirklees	48	23	27
Pendle	24	17	19
Burnley	19	22	24
Wakefield	15	37	50
Harrogate	7	30	32
Manchester	6	44	49
Hounslow	6	287	290
Richmondshire	6	55	60
South Ribble	6	48	49
Highland	6	N/A	N/A
Kingston upon Hull, City of	5	105	106

## Travel to Keighley West

### Totals

Total People travelling to Area	Distance Travelled (in Km)					
	Average (mean)	Maximum	Standard Deviation	Standard Deviation (of the population)	Variance	Variance (of the population)
2,426	3	238	12	12	147,943	147,915
<b>Method of travel to work</b>						
Works mainly at or from home	Public Transport			Bicycle	On Foot	Other
	Train	Bus etc	Taxi			
462	12	169	18	15	368	3
<b>By Car</b>				<b>Motorcycle etc</b>		
<b>As driver</b>		<b>As passenger</b>				
1,203		158				
						18

### By Local Authority

Origin Local Authority	Total People travelling from Area	Distance Travelled (in Km)	
		Average (mean)	Maximum
Bradford	2,259	2	18
Craven	73	11	33
Leeds	36	20	32
Calderdale	27	17	23
Pendle	15	17	20
Kirklees	3	31	31
York	3	53	53
Blackpool	3	73	73
Barnsley	3	41	41
North Hertfordshire	3	238	238
Wakefield	0	37	37

Of the people who travel to work from Keighley West, over 60.5% travel by car (51% as drivers and 9.6% as passengers), 6.6% by motorcycle and 0.3% travel by other means (including train, buses, taxis, bicycle, on foot and other modes). The remaining 6.4% work predominantly from home.

Over 65% more people travel from Keighley West than those that travel to Keighley West.

Of the people who travel to work in Keighley West, over 56.1% travel by car (49.6% as drivers and 6.5% as passengers), 0.7% by motorcycle and 24.1% travel by other means (including train, buses, taxis, bicycle, on foot and other modes). The remaining 19% work predominantly from home.

## Indices of Deprivation 2004 (ID2004)

The Index of Multiple Deprivation 2004 (IMD 2004) is a Super Output Area (SOA) level measure of multiple deprivation. England is divided into 32,482 SOAs, which are small areas containing an average of 1,500 residents. The IMD 2004 project gives a score and rank to each SOA for seven areas of deprivation:

- Income deprivation
- Employment deprivation
- Health deprivation and disability
- Education, skills and training deprivation
- Barriers to Housing and Services
- Living environment deprivation
- Crime

Also, each SOA has been given an overall score and rank which takes into account all seven indices, and this is known as the Index of Multiple Deprivation 2004.

Ranks vary from 1 to 32,482, with 1 being the most deprived. Higher scores indicate that areas are more deprived. When comparing the deprivation of different areas, it is better to look at the rank than the score. Bradford Council has been able to use the Maps and Stats web-based GIS system ([www.mapsandstats.com](http://www.mapsandstats.com)) to combine scores for the SOAs that fall within the wards, and hence estimate the Indices of Deprivation at ward level.

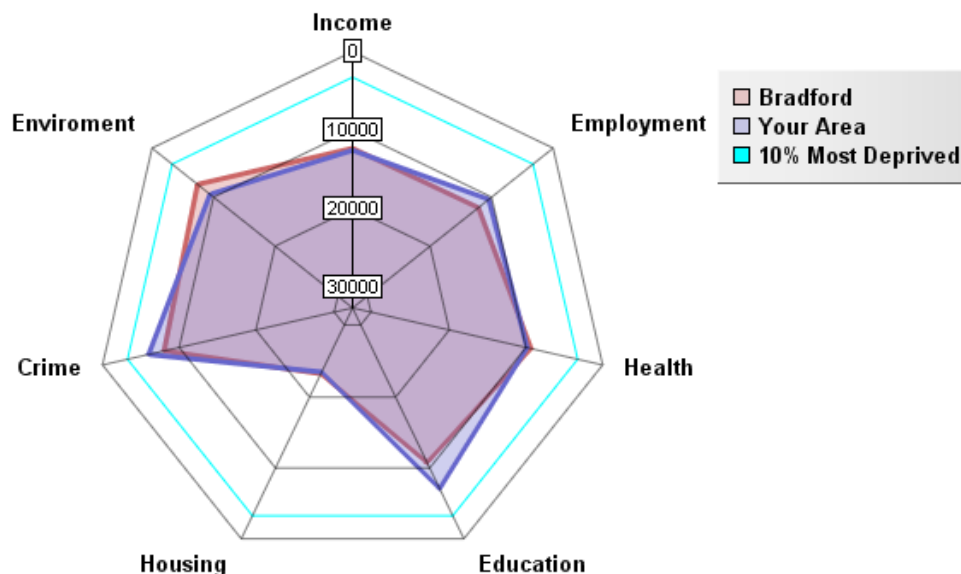
### Index of Multiple Deprivation 2004

	ID 2004 Overall Rank (Average)	ID 2004 Overall Score
E01011908 in Wakefield LA	9855	26.4
<b>Keighley West Ward</b>	<b>9855.31</b>	<b>31.12</b>
E01013721 in Leicester LA	9856	26.39
<b>Average for Bradford</b>	<b>10656.03</b>	<b>32.93</b>

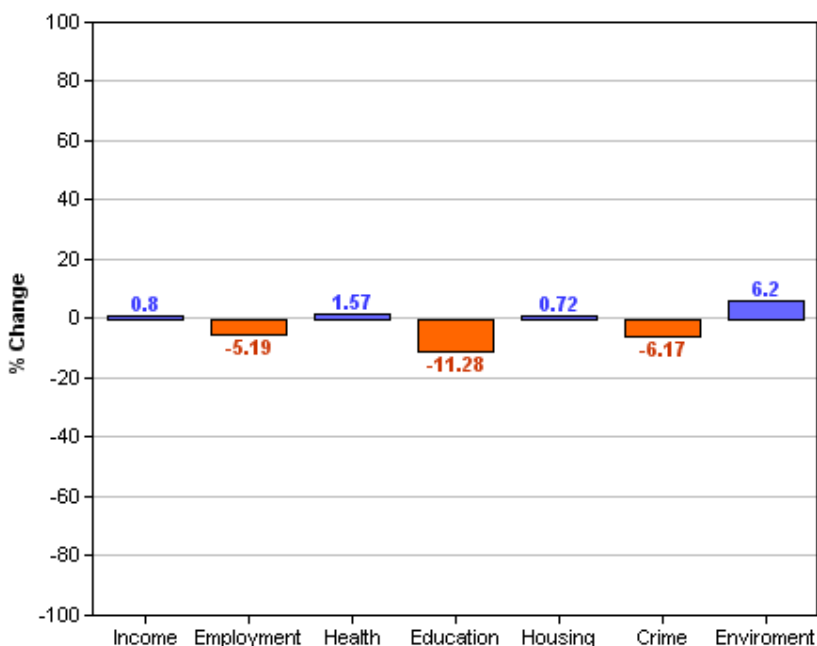
This table shows the average ranks and scores for the Keighley West ward. The rows above and below Keighley West show which SOAs in England have the most similar ranks to this ward, and are therefore considered to have the most similar levels of deprivation. It is important to note, however, that these areas may be deprived for different reasons.

### Area Rank against Average Bradford

The Radar graph below highlights that the following indicators for Crime, Employment and Education are ranked as more deprived than the Bradford district average. Income and Health domain indicators are marginally better than those for the Bradford District. The deprivation difference between the Bradford average and your area is greatest for Education (-11.28) and Crime (-6.17). This indicates that for these two domain indicators your area is more deprived when compared to the Bradford District. Your area is least deprived on the Environment (6.2).



## Percentage Difference between Area Rank and Average Bradford Rank



### Other datasets currently being investigated / acquired:

#### Health

Low birth weight  
 Death Rates  
 Smoking attributable health admissions  
 Perception Surveys (Speak-out)

#### Education

%5 A – C GCSE's (Inc. Maths and English)  
 Key Stage Results  
 Adult qualifications  
 Truancy

#### Economy

Benefit measures & Incapacity benefit  
 Income levels (Household)  
 NEET's  
 Business start-up survival rates

#### Crime

Criminal damage  
 Burglary  
 ASB (Needs clarifying)  
 Youth offending  
 Road traffic accidents (RTA)


#### Liveability

House prices  
 Void properties  
 Cleanliness  
 Open spaces  
 Housing condition

#### Stronger Communities

Voting rates

**Plus many other council datasets as they become available through the GIS strategy.**

	<p>All 30 Ward profiles and supplements can be found at:  <a href="http://www.bradfordinfo.com/census/WardProfiles.cfm">http://www.bradfordinfo.com/census/WardProfiles.cfm</a></p> <p>This bulletin was produced by the <b>Research and Consultation Service</b>,              City of Bradford Metropolitan District Council.              Email: <a href="mailto:stephen.elves@bradford.gov.uk">stephen.elves@bradford.gov.uk</a> Tel: 01274 43 7269              August 2007</p>
---	--