

Shipley Ward Profile Supplement

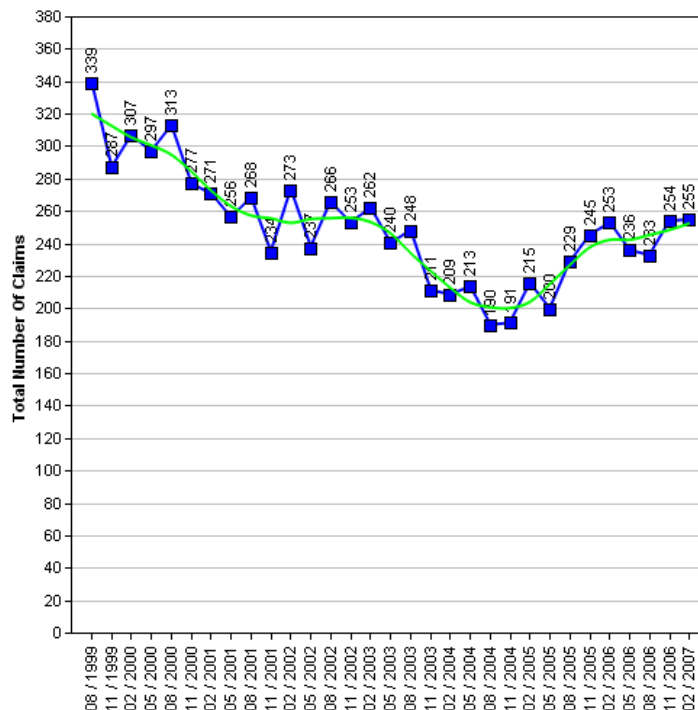
The Census is a survey of all people and households in the country that takes place every 10 years. The Census was last carried out in 2001, with results published in 2003. The next Census is due in 2010, with results expected in 2013. Consequently the actual data cannot be updated in intervening years.

Work has been underway for some time to produce a range of alternative datasets for Bradford to supplement the 2001 Census data with more current and relevant information, which will better describe conditions and progress across the District. This supplement provides a taster of that work.

It is the intention to consult Elected Members on themes and priorities. Regular data updates will then be incorporated into the intranet 'Members Information System' supported by improved analysis and narrative. Periodic snapshots in paper document form will continue to be available.

Job Seekers Allowance

The 1991 to 2006 Job Seekers Allowance data give an insight into the number of claimants under pensionable age who are available for, and actively seeking work of at least 40 hours a week.



Job Seekers Allowance Claimants

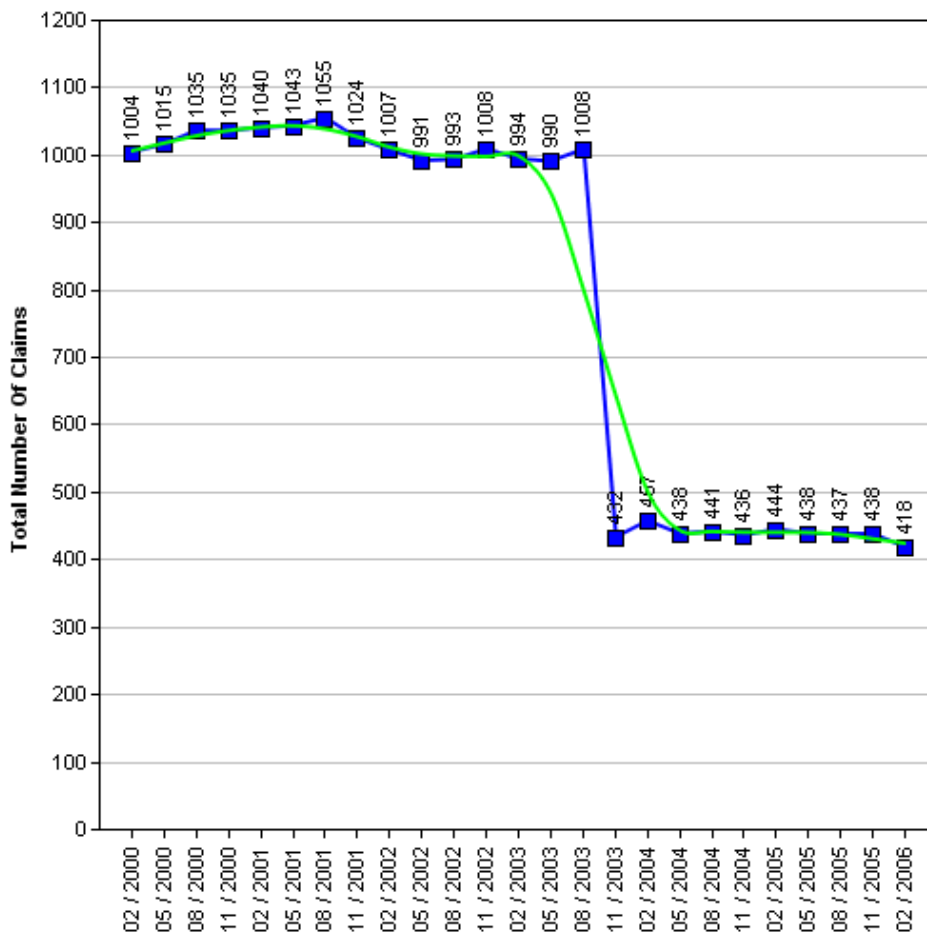
	1999	2000	2001	2002	2003	2004	2005	2006	2007
Quarter 1 (February)	-	307	271	273	262	209	215	253	255
Quarter 2 (May)	-	297	256	237	240	213	200	236	-
Quarter 3 (August)	339	313	268	266	248	190	229	233	-
Quarter 4 (November)	287	277	234	253	211	191	245	254	-



Income Support

The 2000 to 2006 Income Support data give an insight into the number of claimants between the age of 16-59 who have a low income, don't have savings of £16,000 or more, or not working or work on average less than 16 hours a week, or are unable to work because they are:

- A Lone parent
- Registered sick or disabled
- A student and either a lone parent or disabled
- Or caring for someone who is sick or elderly



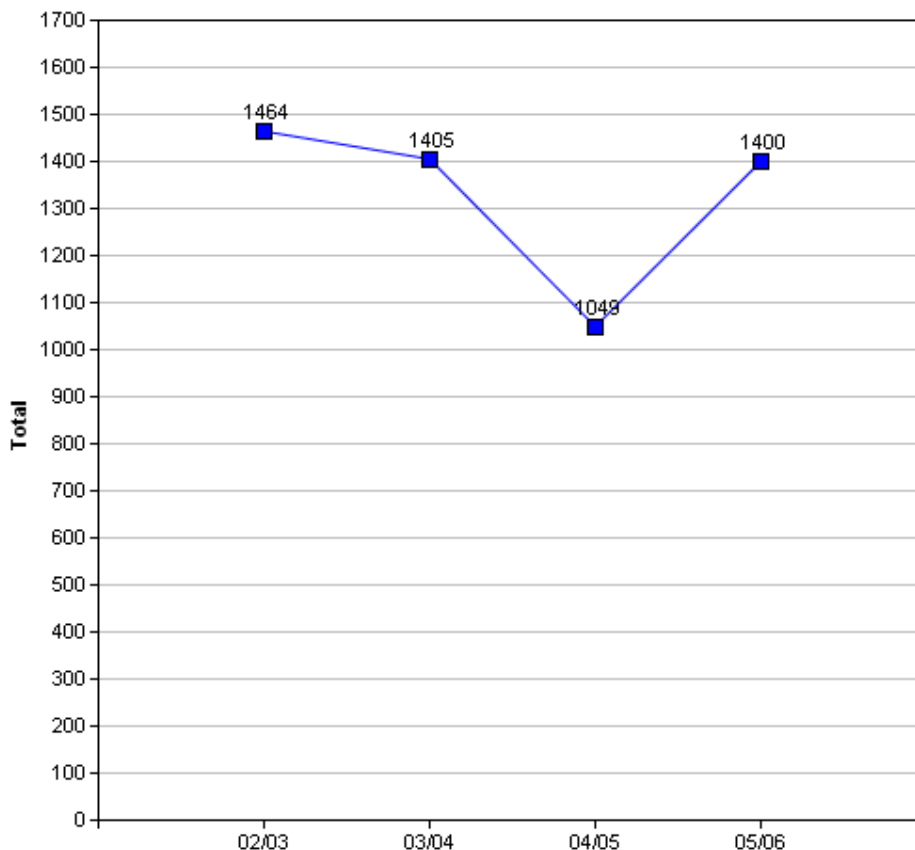
WARNING: In the Income Support table there is a drop in the number of claimants between the months of August 2003 and November 2003. The explanation for this is because "from October 2003, Income Support for pensioners was replaced by 'Pension Credit'" (Source: www.mind.org.uk).

Income Support Claimants

	2000	2001	2002	2003	2004	2005	2006
Quarter 1 (February)	-	1,040	1,007	994	457	444	418
Quarter 2 (May)	1,004	1,043	991	990	438	438	-
Quarter 3 (August)	1,015	1,055	993	1,008	441	437	-
Quarter 4 (November)	1,035	1,024	1,008	432	436	438	-

Crime

The Crime data is based on the Crime Domain from the Indices of Deprivation 2004. The Crime Domain consists of 33 categories of recorded crime which are then grouped to form 4 composite indicators: burglary, criminal damage, theft and violence. This report gives an insight into the number of offences committed within the selected area and compares this with the Bradford district. The data is displayed for each year by composite indicator.

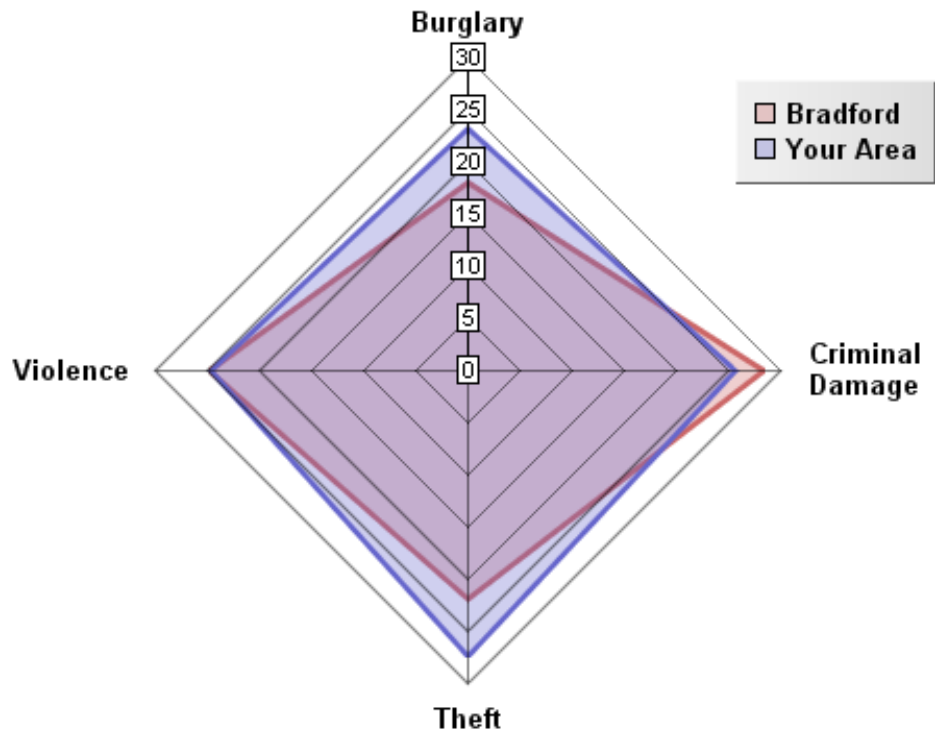


The pattern of crime in the Shipley Ward has broadly followed a similar trend to the district. In 2004/05 numerous district wide initiatives from West Yorkshire Police and the District Crime and Disorder Reduction Partnership yielded significant reductions in crime across most categories. This was an exceptional year for crime reduction and such significant reductions have proven to be unsustainable in the following years. However there has still been a 4% decrease in crime between 2002 and 2006. It is important to note that ID2004 Crime Domain definition of crime is limited to a subset of crime. A more accurate picture can be obtained by looking at Overall Crime Levels in the district.

Overall Crimes per Year

Year	Selected Area			Bradford District		
	No.Offences	Change	% Change	No.Offences	Change	% Change
2002/03	1,464			49,264		
2003/04	1,405	-59	-4.0%	48,973	+291	-0.6%
2004/05	1,049	-356	-25.3%	40,747	+8,226	-16.8%
2005/06	1,400	+351	+33.5%	43,562	-2,815	+6.9%

05/06 Comparison with District (Rate per 1000 population)

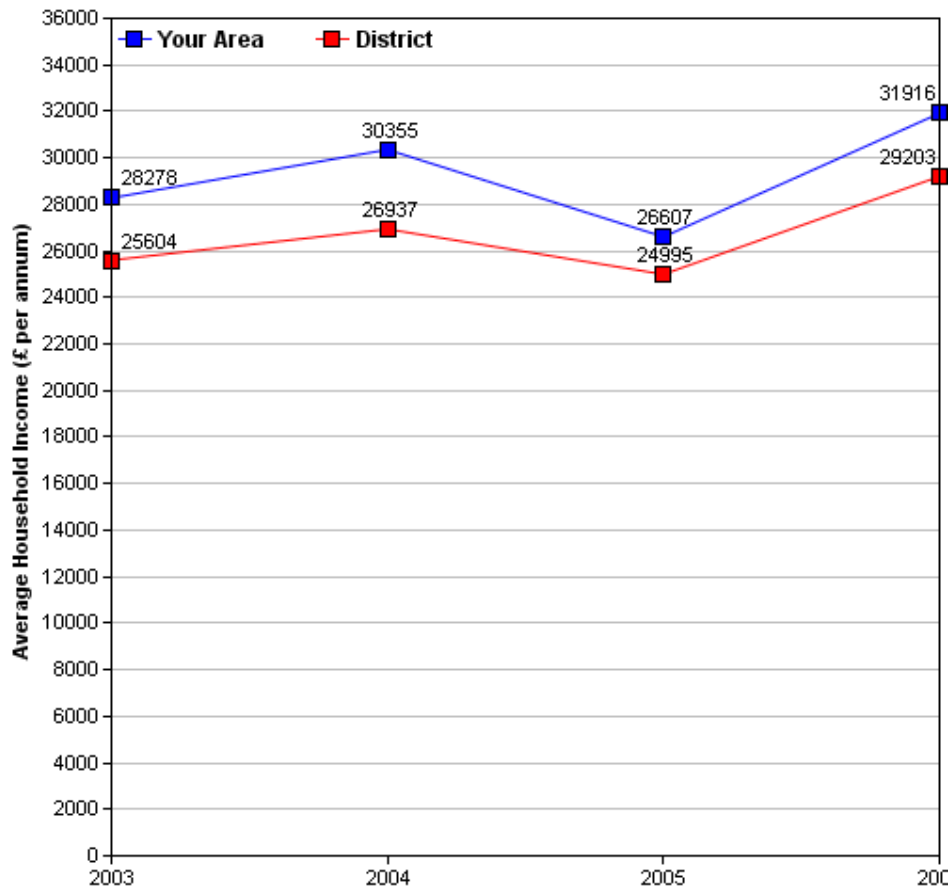


The above crime radar graph compares four variables of crime, per thousand population for your area, with that of the Bradford district. The pink line indicates the Bradford District average and the blue line represents the average for your area. The radar graph allows us to see only Violence is similar to the Bradford District average of 25 per thousand population. Only Criminal Damage for your area is below that of the district average. The radar graph also allows you to see which crime variables are closer or further from the district rate, by comparing the gap between the blue and pink lines. Violence is closer to the district average, as the gap between the pink and blue lines are shortest for this variable, when compared to the other crime variables for your area. The gaps between the district rate and your area are longer for Burglary and Theft. This indicates these crime variables are significantly different than the district average. These crime averages may well reflect the Shipley wards higher levels of deprivation and urban characteristics.

Income

Information relating to income is derived from data supplied by CACI called 'PayCheck', which provides estimates of mean household income for every postcode in the UK. Unfortunately, it is not possible to use PayCheck data to examine changes in income over time, due to changes in data collection methods. However, it is possible to compare figures from different geographic areas (i.e. Ward and District) for the same time period, as they are derived using the same data collection method.

(For more information on PayCheck data please see www.caci.co.uk.)



Overall Income by Year

	2003	2004	2005	2006
Mean per Annum	£28,278.26	£30,354.97	£26,607.08	£31,916.16
Mean per Annum (District)	£25,604.05	£26,936.70	£24,995.30	£29,203.12

Ethnic Diversity

This data comes from the 1991 and 2001 Censuses and shows the diversity of ethnic groups within the Bradford District. By comparing the 1991 Census with the 2001 Census we are able to compare the area over time.

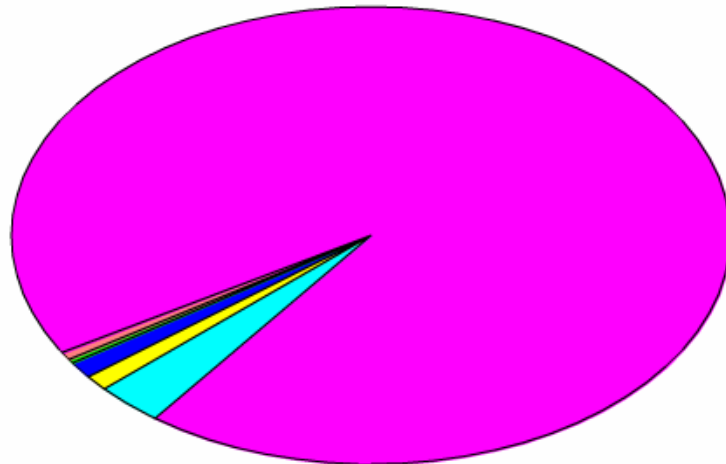
Ethnic Diversity 1991

	Number	Percentage
White	13,888	96.8 %
Asian	245	1.7 %
Black	77	0.5 %
Other	138	1.0 %

Ethnic Diversity 2001

	Number	Percentage
White	12,964	93.8 %
Mixed	165	1.2 %
Asian	583	4.2 %
Black	39	0.3 %
Other	71	0.5 %

■ Bangladeshi	18(0%)
■ Black or Black British	38(0%)
■ Indian	146(1%)
■ Mixed(1)	165(1%)
■ Pakistani	418(3%)
■ White	12,964(94%)
■ Other ethnic group	71(1%)



Travel to Work (Census 2001)

This data comes from the 2001 Census. It has details about the people who travel to and from the area to go to work, and their method of getting there.

Travel from Shipley

Totals

Total People travelling from Area	Distance Travelled (in Km)					
	Average (mean)	Maximum	Standard Deviation	Standard Deviation (of the population)	Variance	Variance (of the population)
6,692	9	477	29	29	855,046	854,981
Method of travel to work						
Works mainly at or from home	Public Transport			Bicycle	On Foot	Other
	Train	Bus etc	Taxi			
531	492	684	16	62	838	23
By Car				Motorcycle etc		
As driver		As passenger				
3,572		399		71		

By Local Authority

Destination Local Authority	Total People travelling from Area	Distance Travelled (in Km)	
		Average (mean)	Maximum
Bradford	5,185	3	14
Leeds	916	15	30
Kirklees	146	18	29
Calderdale	85	13	19
Wakefield	75	26	36
Craven	39	19	22
Harrogate	33	24	26
York	18	50	57
Salford	12	51	52
Barnsley	12	39	43
Rotherham	9	51	55
Trafford	9	53	55
Blackburn with Darwen	9	46	47
Rochdale	6	33	37
Manchester	6	50	55

Travel to Shipley

Totals

Total People travelling to Area	Distance Travelled (in Km)					
	Average (mean)	Maximum	Standard Deviation	Standard Deviation (of the population)	Variance	Variance (of the population)
10,338	8	288	21	21	458,748	458,732
Method of travel to work						
Works mainly at or from home	Public Transport			Bicycle	On Foot	Other
	Train	Bus etc	Taxi			
531	385	1,025	46	108	1,227	27
By Car				Motorcycle etc		
As driver		As passenger				
6,036		874		78		

By Local Authority

Origin Local Authority	Total People travelling from Area	Distance Travelled (in Km)	
		Average (mean)	Maximum
Bradford	8,335	4	15
Leeds	1,030	12	30
Kirklees	211	16	29
Calderdale	188	14	24
Craven	157	21	61
Harrogate	86	25	39
Wakefield	57	29	41
York	18	46	53
Sheffield	15	50	55
Selby	15	42	48
Bury	12	44	46
Kingston upon Hull, City of	12	93	95
Salford	9	53	54
Blackburn with Darwen	9	47	49
Rochdale	9	30	31

Of the people who travel to work from Shipley, over 5.93% travel by car (53.4% as drivers and 6% as passengers), 1.1% by motorcycle and 0.3% travel by other means (including train, buses, taxis, bicycle, on foot and other modes). The remaining 7.9% work predominantly from home.

Over 35% more people travel to Shipley than those that travel from Shipley.

Of the people who travel to work in Shipley, over 66.8% travel by car (58.4% as drivers and 8.5% as passengers), 0.75% by motorcycle and 27.3% travel by other means (including train, buses, taxis, bicycle, on foot and other modes). The remaining 5.1% work predominantly from home.

Indices of Deprivation 2004 (ID2004)

The Index of Multiple Deprivation 2004 (IMD 2004) is a Super Output Area (SOA) level measure of multiple deprivation. England is divided into 32,482 SOAs, which are small areas containing an average of 1,500 residents. The IMD 2004 project gives a score and rank to each SOA for seven areas of deprivation:

- Income deprivation
- Employment deprivation
- Health deprivation and disability
- Education, skills and training deprivation
- Barriers to Housing and Services
- Living environment deprivation
- Crime

Also, each SOA has been given an overall score and rank which takes into account all seven indices, and this is known as the Index of Multiple Deprivation 2004.

Ranks vary from 1 to 32,482, with 1 being the most deprived. Higher scores indicate that areas are more deprived. When comparing the deprivation of different areas, it is better to look at the rank than the score. Bradford Council has been able to use the Maps and Stats web-based GIS system (www.mapsandstats.com) to combine scores for the SOAs that fall within the wards, and hence estimate the Indices of Deprivation at ward level.

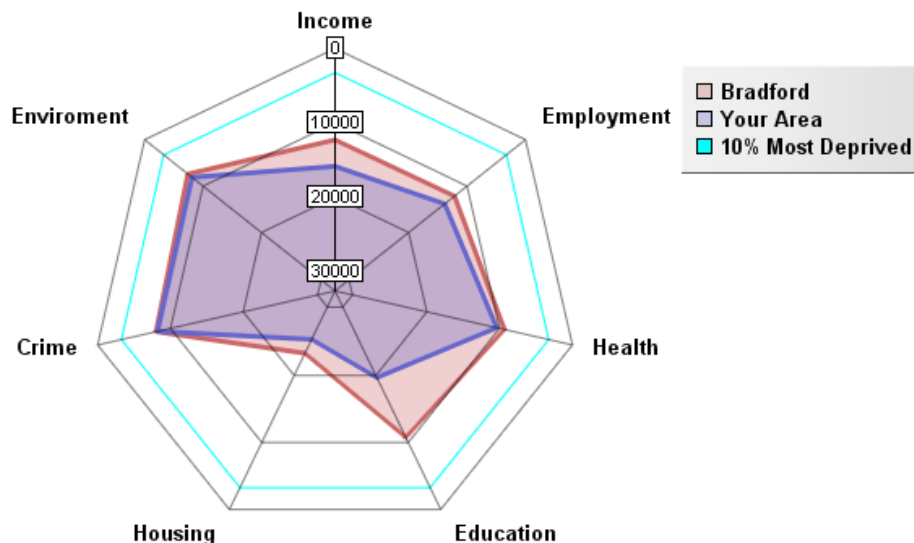
Index of Multiple Deprivation 2004

	ID 2004 Overall Rank (Average)	ID 2004 Overall Score
E01028621 in South Oxfordshire LA	13444	20.54
Shipley Ward	13444.34	23.13
E01008315 in Newcastle upon Tyne LA	13445	20.54
Average for Bradford	10656.03	32.93

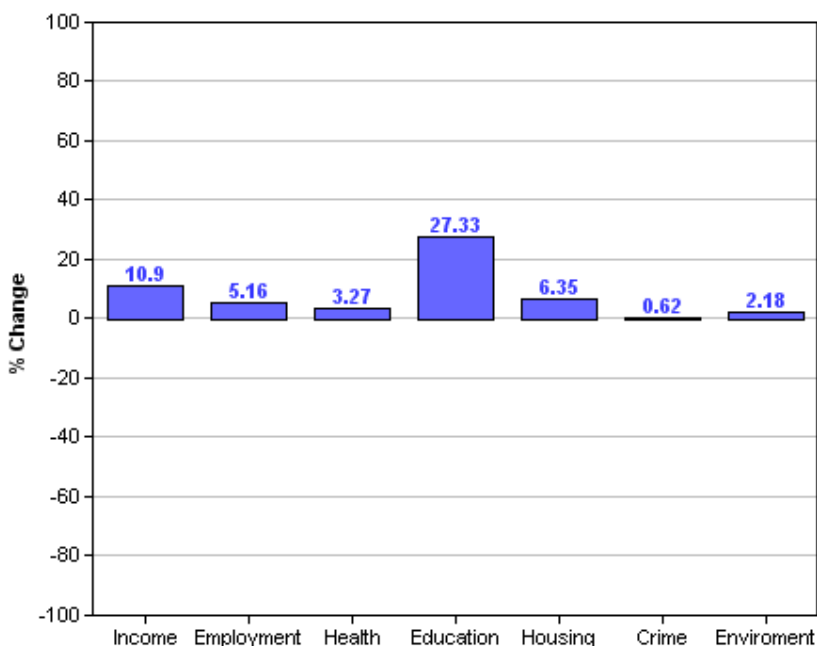
This table shows the average ranks and scores for the Shipley ward. The rows above and below Shipley show which SOAs in England have the most similar ranks to this ward, and are therefore considered to have the most similar levels of deprivation. It is important to note, however, that these areas may be deprived for different reasons.

Area Rank against Average Bradford Rank

The following radar graph and bar chart indicate that Shipley is least deprived, compared to the rest of the District, on all indicators. The Index of Deprivation 2004 highlights that for Crime, Environment and Health Shipley is closest and only slightly better than that of the district average. The difference between the district average and Shipley domains are greatest for Education. This highlights that for this domain Shipley is least deprived compared to the district average.



Percentage Difference between Area Rank and Average Bradford Rank



Other datasets currently being investigated/acquired

Health

Low birth weight
 Death Rates
 Smoking attributable health admissions
 Perception Surveys (Speak-out)

Education

%5 A – C GCSE's (Inc. Maths and English)
 Key Stage Results
 Adult qualifications
 Truancy

Economy

Benefit measures & Incapacity benefit
 Income levels (Household)
 NEET's
 Business start-up survival rates

Crime

Criminal damage
 Burglary
 ASB (Needs clarifying)
 Youth offending
 Road traffic accidents (RTA)


Liveability

House prices
 Void properties
 Cleanliness
 Open spaces
 Housing condition

Stronger Communities

Voting rates

Plus many other council datasets as they become available through the GIS strategy.

	<p>All 30 Ward profiles and supplements can be found at: http://www.bradfordinfo.com/census/WardProfiles.cfm</p> <p>This bulletin was produced by the Research and Consultation Service, City of Bradford Metropolitan District Council. Email: stephen.elves@bradford.gov.uk Tel: 01274 43 7269 August 2007</p>
---	--